



CONGREVE STREET, SE17

£2,800 per month

Three bedrooms
One bathroom
Close to transport
Separate kitchen
Private entrance
Furnished

@marshandparsons
marshandparsons.co.uk

MARSH &
PARSONS

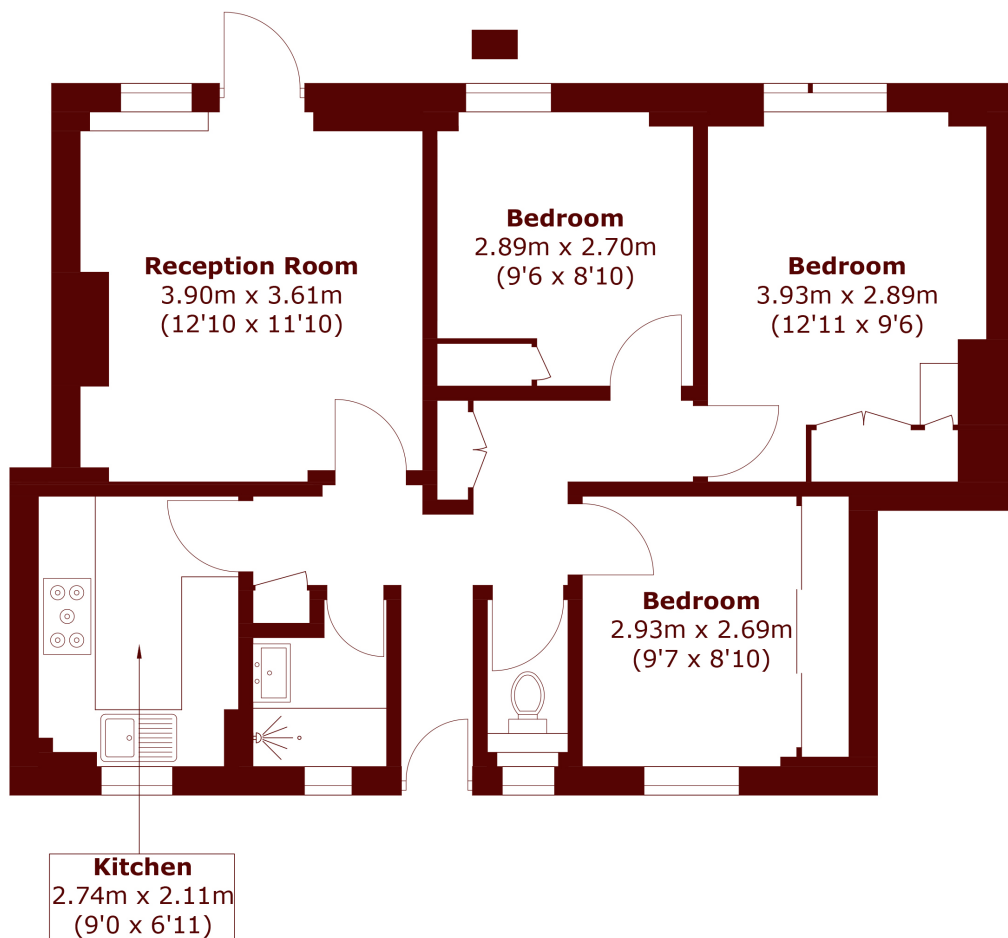


ABOUT THE PROPERTY

A well-presented three bedroom apartment set within Comus House, a purpose-built block positioned on Congreve Street in the heart of Elephant & Castle. The flat has been finished to a good standard throughout, offering a bright and well-proportioned reception room, a fitted kitchen with ample storage, three comfortable bedrooms and a contemporary bathroom. The property benefits from excellent natural light and generous room volumes throughout, making it an ideal choice for a family or sharers seeking a spacious and well-connected home in one of South London's most exciting postcodes.



STEP INSIDE CONGREVE STREET



Total area (approx.): 63.0 sq. m (678.1 sq. ft)

Kennington
020 7932 2920

Energy Rating: C We aim to make our particulars both accurate and reliable. However, they are not guaranteed; nor do they form part of an offer or contract. If you require clarification on any points then please contact us, especially if you're traveling some distance to view. Please note that appliances and heating systems have not been tested and therefore no warranties can be given as to their good working order

**MARSH &
PARSONS**