



GREYHOUND ROAD, W6

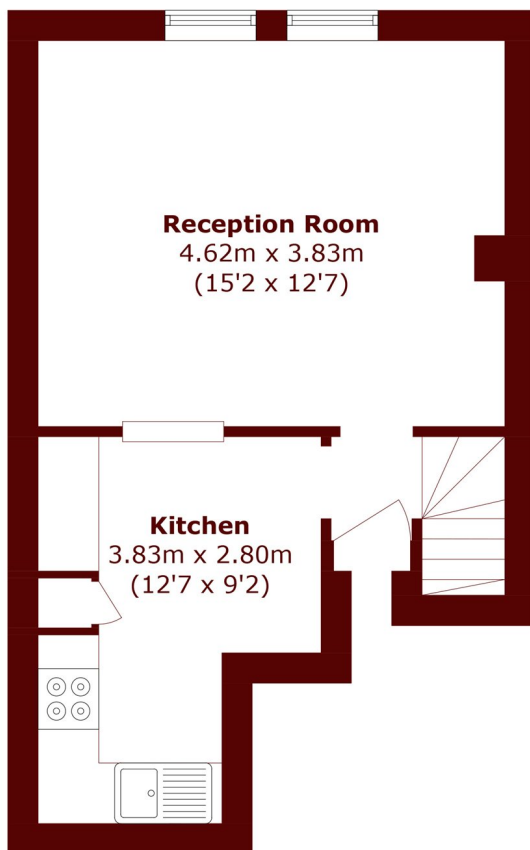
£2,550 per week

This spacious two bedroom apartment is presented in excellent condition and benefits from an abundance of natural light. On the first floor the property comprises generous living room and separate kitchen with ample

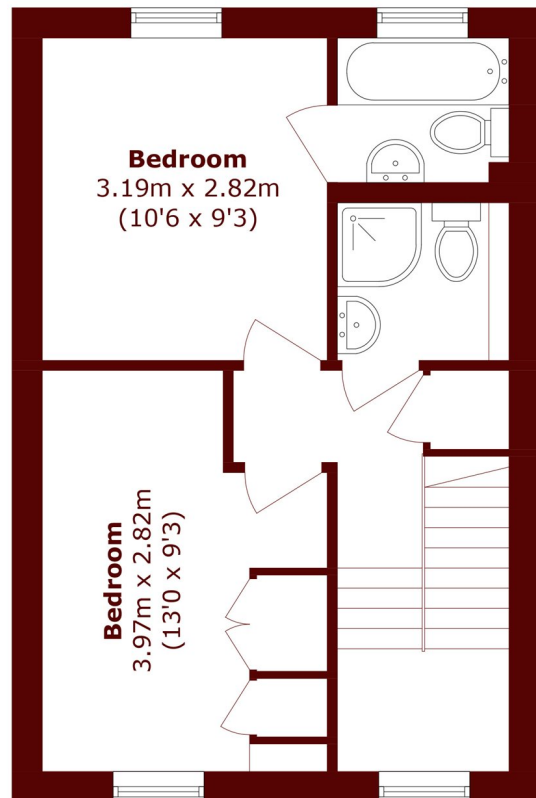
Two bedrooms
Two bathrooms

Split level
Close to transport

STEP INSIDE GREYHOUND ROAD



Second Floor



Third Floor

Total area (approx.): 63.0 sq. m (678.1 sq. ft)

Bishops Park
020 7368 2480

Energy Rating: We aim to make our particulars both accurate and reliable. However, they are not guaranteed; nor do they form part of an offer or contract. If you require clarification on any points then please contact us, especially if you're traveling some distance to view. Please note that appliances and heating systems have not been tested and therefore no warranties can be given as to their good working order

**MARSH &
PARSONS**