



ARTERBERRY ROAD, SW20

£695,000

Detached Period Building
Ground Floor
Two Bedrooms
Private Patio
Garage/Parking
A Large Cellar/Basement

@marshandparsons
marshandparsons.co.uk

MARSH &
PARSONS



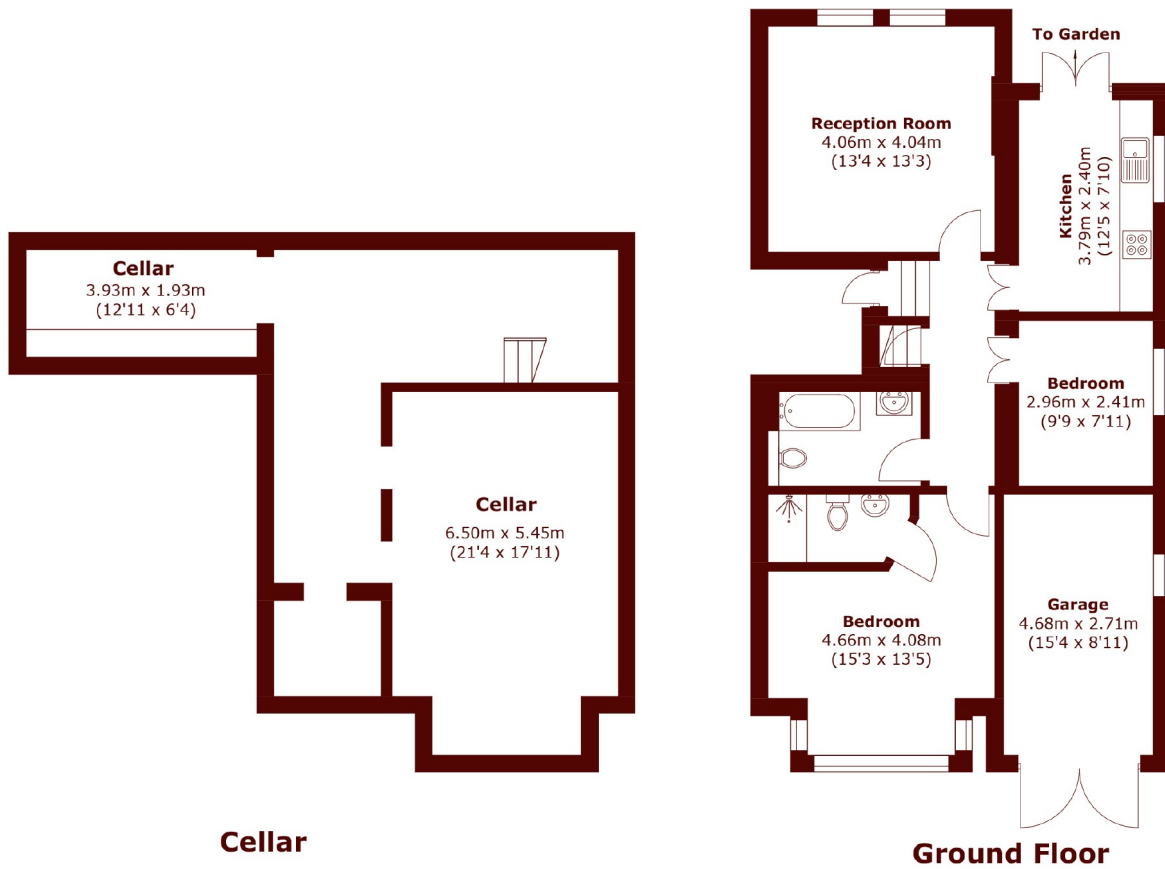
ABOUT THE PROPERTY

Located on the ground floor of this magnificent detached period property is a two bedroom, two bathroom apartment with direct access onto a private patio overlooking the communal garden. The property offers a large basement with ample storage area, a garage and off street parking.

Arterberry Road is within easy reach of the shops and amenities of Wimbledon town centre and the cafes and boutiques of Wimbledon Village.



STEP INSIDE ARTERBERRY ROAD



Total area (approx.): 126.7 sq. m (1,363.8 sq. ft)
(Including Cellar)

Garage : 12.8 sq. m (137.8 sq. ft)

Total: 139.5 sq. m (1501.6 sq. ft)

Wimbledon
020 8879 6660

Energy Rating: C We aim to make our particulars both accurate and reliable. However, they are not guaranteed; nor do they form part of an offer or contract. If you require clarification on any points then please contact us, especially if you're traveling some distance to view. Please note that appliances and heating systems have not been tested and therefore no warranties can be given as to their good working order

MARSH &
PARSONS