



MARRYAT ROAD, SW19

£3,750,000

Rare opportunity
Private entrance
Six bedrooms
Secluded mature garden
Village location
Energy rating: c

@marshandparsons
marshandparsons.co.uk

MARSH &
PARSONS

ABOUT THE PROPERTY

Once owned by the celebrated Violist Lionel Tertis CBE, This exceptional and very rare, six bedroom apartment (3320 SQ.FT/308.5 SQ.MT) exudes Victorian grandeur and has been converted from the ground floor of a handsome house set amongst substantial well manicured grounds.

Situated in a highly desirable and leafy location on the edge of Wimbledon Common and close to the Village for its superb boutiques, cafés and restaurants. Wimbledon town centre is within easy reach with regular mainline and tube links to central London.







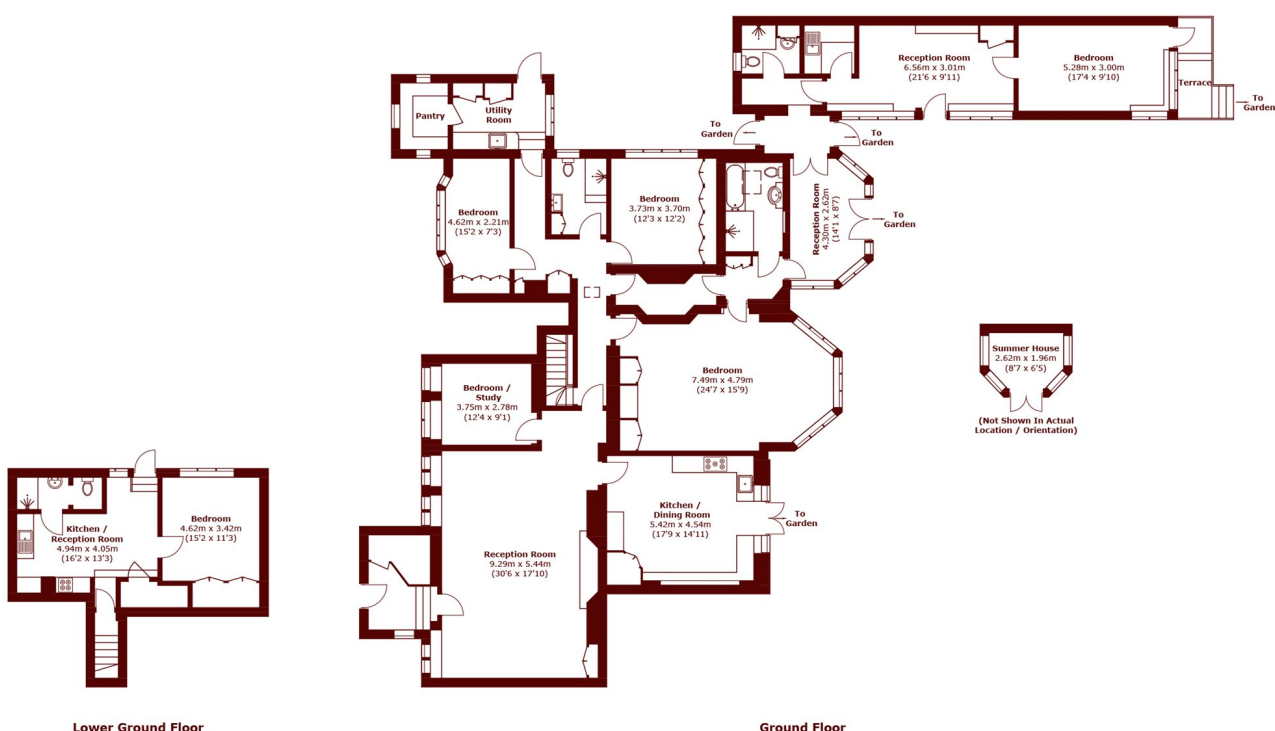
FURTHER DETAILS

Featuring numerous period detailing throughout, its vast layout includes a generous reception room with adjoining study, whilst the well-fitted kitchen offers a wonderful family area opening to the patio. This maximises the light from its southerly orientation and the views of its lovely garden offering superb seclusion.

Clever incorporation of a self-contained studio and added side extension forms part of a very well thought out layout with spacious and well-appointed bedrooms, bathrooms/WCs and useful utility rooms.



STEP INSIDE MARRYAT ROAD



Total area (approx.): 308.5 sq. m (3,320.6 sq. ft)
 Summer House: 4.8 sq. m (51.7 sq. ft)
 Terrace: 5.0 sq. m (53.8 sq. ft)

Wimbledon
 020 8879 6660

Energy Rating: C We aim to make our particulars both accurate and reliable. However, they are not guaranteed; nor do they form part of an offer or contract. If you require clarification on any points then please contact us, especially if you're traveling some distance to view. Please note that appliances and heating systems have not been tested and therefore no warranties can be given as to their good working order

MARSH &
 PARSONS