



Fulham Palace Road, SW6

£3,250 pcm



• Two Bedrooms

• Two Bathroom

• Roof Terrace





ABOUT THE PROPERTY

A recently refurbished split-level two-bedroom, two-bathroom apartment finished to a high standard while retaining period charm. The first floor offers a bright reception room with feature fireplace, a modern eat-in kitchen, a double bedroom with built-in storage and a family bathroom. The top floor comprises a spacious principal bedroom with en-suite, generous eaves storage and access to a private roof terrace. Perfectly positioned opposite Bishops Park and Fulham Palace, the property is moments from the cafés, shops and pubs of Fulham Palace Road and Parsons Green, with Putney Bridge and Parsons Green Underground Stations both within easy walking distance.

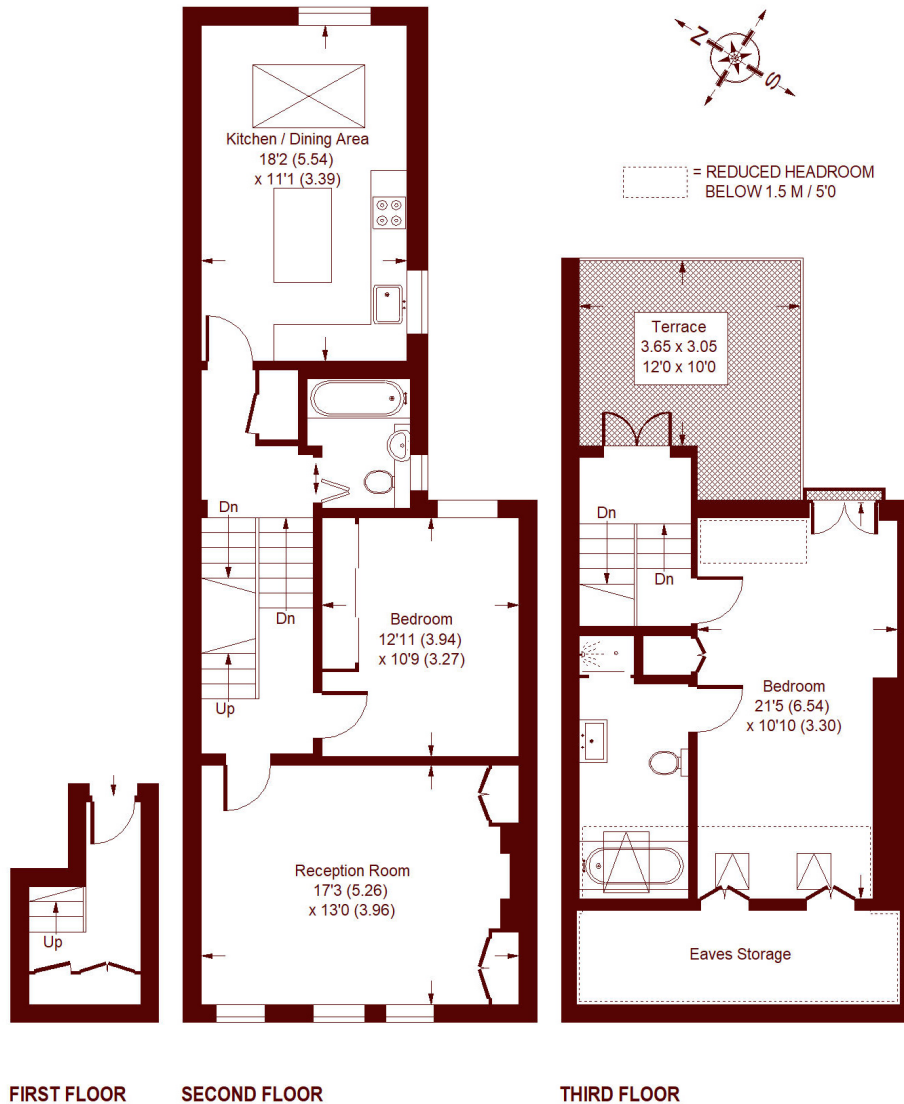


Council Tax Band - D



Fulham Palace Road, SW6

APPROX. GROSS INTERNAL FLOOR AREA = 1181 SQFT / 109.7 SQM
EAVES STORAGE = 89 SQFT / 8.3 SQM
TOTAL = 1270 SQFT / 118 SQM



Whilst every attempt has been made to ensure the accuracy of the floor plan, measurements are approximate and not to scale.
No guarantee is given on the total square footage of the property quoted on the plan. Figures given are for guidance.
Plan is for illustration purposes only, not to be used for valuations.

Marsh & Parsons Bishops Park

333 Fulham Palace Road,
London, SW6 6TE
020 7993 9888