



## SPRING GROVE, W4

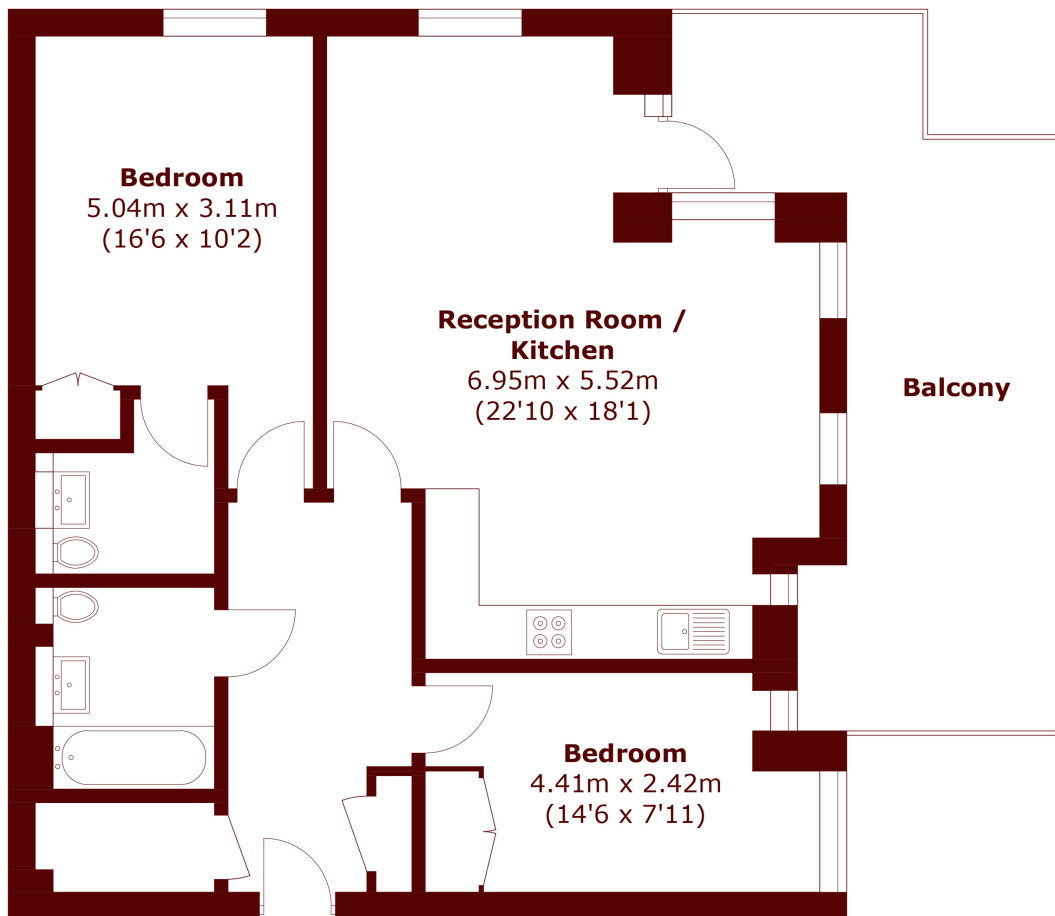
£3,800 per month

This fabulous apartment is located on the second floor (with lift) of this modern development. The property benefits from generous proportions throughout and is well presented.

Two bedrooms  
Two bathrooms  
Private balcony

Modern interior  
Centrally located  
Energy rating: c

# STEP INSIDE SPRING GROVE



Total area (approx.): 77.4 sq. m (833.1 sq. ft)  
Balcony: 21.6 sq. m (232.5 sq. ft)

Chiswick  
020 8629 0900

Energy Rating: C We aim to make our particulars both accurate and reliable. However, they are not guaranteed; nor do they form part of an offer or contract. If you require clarification on any points then please contact us, especially if you're traveling some distance to view. Please note that appliances and heating systems have not been tested and therefore no warranties can be given as to their good working order

MARSH &  
PARSONS