



THORNTON HILL, SW19

£1,950 per month

One double bedroom
Period features
Wooden flooring throughout
Communal gardens
Close to transport links
Energy rating: d

@marshandparsons
marshandparsons.co.uk

MARSH &
PARSONS



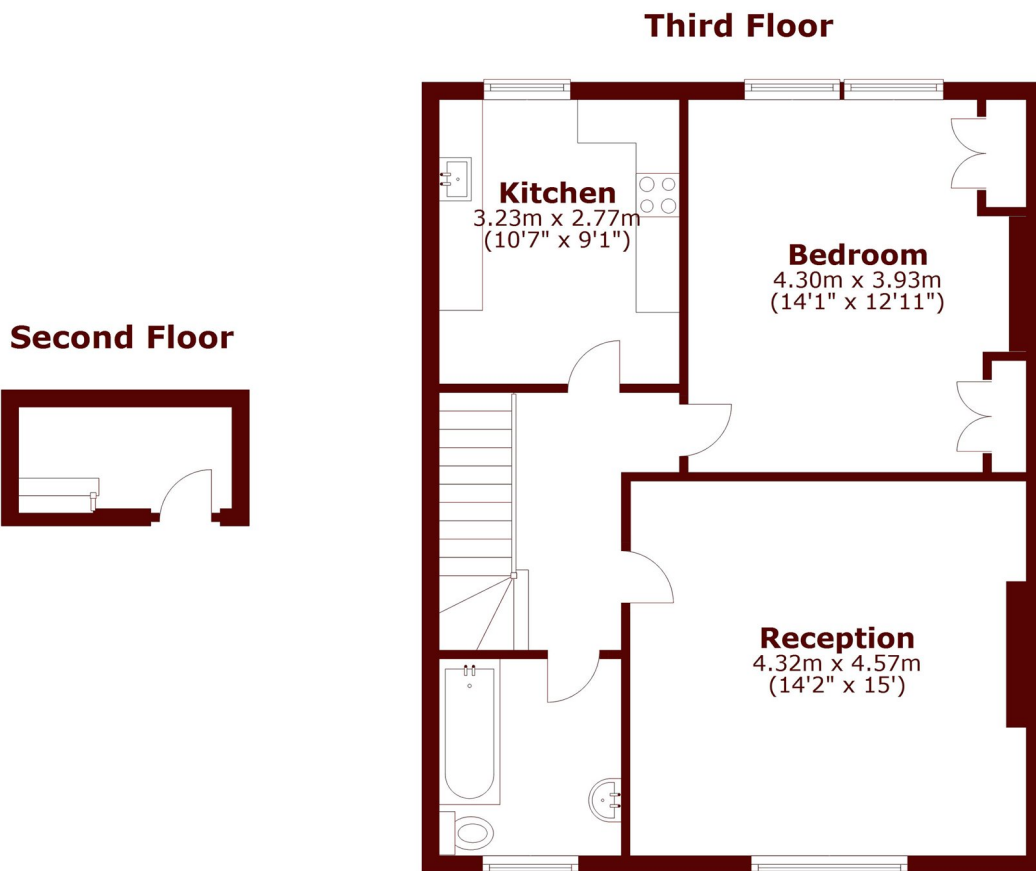
ABOUT THE PROPERTY

A one bedroom period conversion with wooden flooring throughout offering a living / dining room, modern fitted kitchen, double bedroom, bathroom with shower over bath and a communal garden.

Located in a sought after location close to Wimbledon station.



STEP INSIDE THORNTON HILL



Total area: approx. 55.4 sq. metres (595.9 sq. feet)

Wimbledon
020 8879 6661

Energy Rating: D We aim to make our particulars both accurate and reliable. However, they are not guaranteed; nor do they form part of an offer or contract. If you require clarification on any points then please contact us, especially if you're traveling some distance to view. Please note that appliances and heating systems have not been tested and therefore no warranties can be given as to their good working order

MARSH &
PARSONS