



BRONDESBURY PARK, NW6

£1,900 per month

One Bedroom
Open Plan Living Kitchen
Communal Garden
Modern
Wooden Flooring
Great Location

@marshandparsons
marshandparsons.co.uk

MARSH &
PARSONS



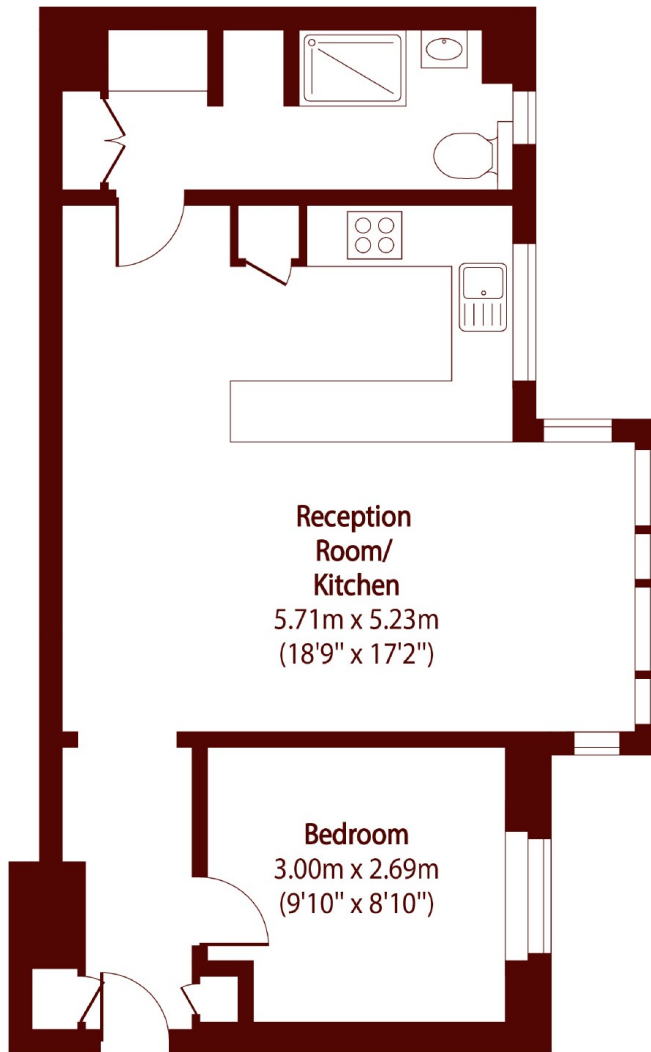
ABOUT THE PROPERTY

A spacious one bedroom apartment with communal garden on the top floor of a well-maintained block in Brondesbury Park. Layout includes a modern shower room, a large open plan reception and wooden floors.

Blandford Court is moments away from Brondesbury Park overground as well as being a short walk to Queen's Park underground station (Bakerloo line). Queen's Park itself is also a five minute walk away.



STEP INSIDE BRONDESBURY PARK



Total area (approx): 447.66 sq m (513 sq. ft)

Queen's Park
020 7871 5050

Energy Rating: C We aim to make our particulars both accurate and reliable. However, they are not guaranteed; nor do they form part of an offer or contract. If you require clarification on any points then please contact us, especially if you're traveling some distance to view. Please note that appliances and heating systems have not been tested and therefore no warranties can be given as to their good working order

MARSH &
PARSONS