



ASHBOURNE TERRACE, SW19

£2,700 per month

Two bedrooms
Modern kitchen
Separate reception room
Patio garden
Off-street parking
Energy rating: c

@marshandparsons
marshandparsons.co.uk

MARSH &
PARSONS



ABOUT THE PROPERTY

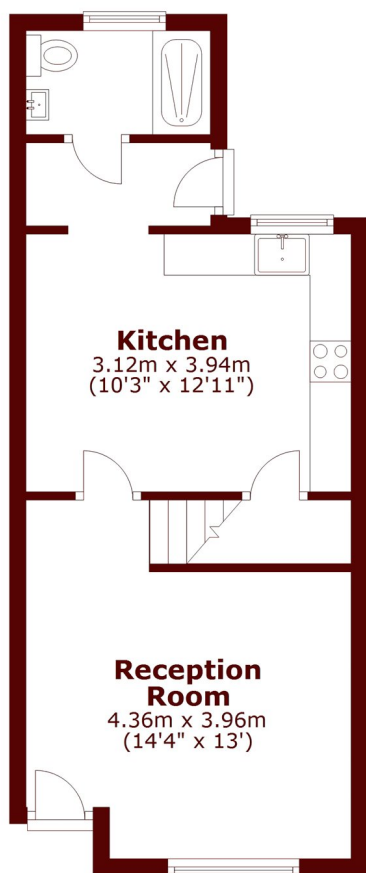
A recently refurbished two bedroom house. The house has a separate living room, newly fitted kitchen, a pretty patio garden, two double bedrooms and a bathroom. The property also has a private driveway.

Located in the heart of Wimbledon.

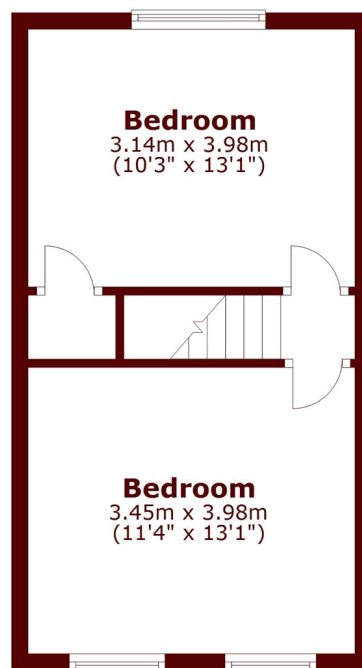


STEP INSIDE ASHBOURNE TERRACE

Ground Floor



First Floor



Total area: approx. 65.2 sq. metres (702.2 sq. feet)

Wimbledon
020 8879 6661

Energy Rating: C We aim to make our particulars both accurate and reliable. However, they are not guaranteed; nor do they form part of an offer or contract. If you require clarification on any points then please contact us, especially if you're traveling some distance to view. Please note that appliances and heating systems have not been tested and therefore no warranties can be given as to their good working order

MARSH &
PARSONS