



## JUSTIN CLOSE, TW8

£475,000

Two bedrooms  
Direct river views  
Modern interior  
Allocated parking  
Long lease  
Energy rating: d

@marshandparsons  
marshandparsons.co.uk

MARSH &  
PARSONS



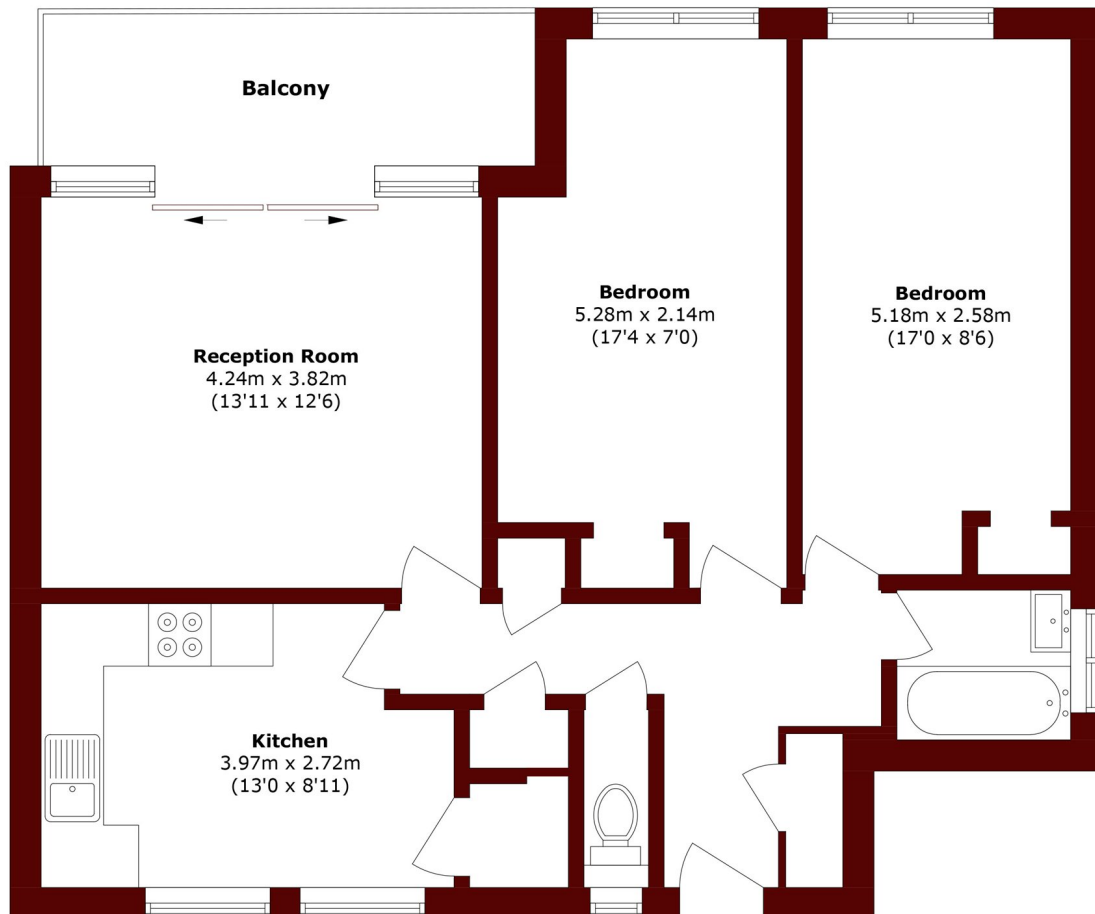
# ABOUT THE PROPERTY

A stunning newly refurbished two-bedroom apartment in the sought-after Marcus Court, Brentford Dock, boasting beautiful river views. This bright and stylish home features a spacious reception room with access to a private balcony overlooking the water, a modern fitted kitchen, two double bedrooms, and a sleek contemporary bathroom. Set within a secure riverside development with allocated parking and well-kept communal grounds.

Marcus Court is ideally located close to Brentford High Street, excellent transport links into Central London, and scenic riverside walks towards Kew.



# STEP INSIDE JUSTIN CLOSE



Total area (approx.): 69.9 sq. m (752.4 sq. ft)

Balcony area (approx.): 7.2 sq. m (77.5 sq. ft)

Chiswick  
020 8994 2556

Energy Rating: D We aim to make our particulars both accurate and reliable. However, they are not guaranteed; nor do they form part of an offer or contract. If you require clarification on any points then please contact us, especially if you're traveling some distance to view. Please note that appliances and heating systems have not been tested and therefore no warranties can be given as to their good working order

MARSH &  
PARSONS