



LATCHMERE ROAD, SW11

£2,800 per month

Two bedroom
Local amenities
Close to Clapham Common
Great transport links
Private patio garden
Energy rating: d.

@marshandparsons
marshandparsons.co.uk

MARSH &
PARSONS

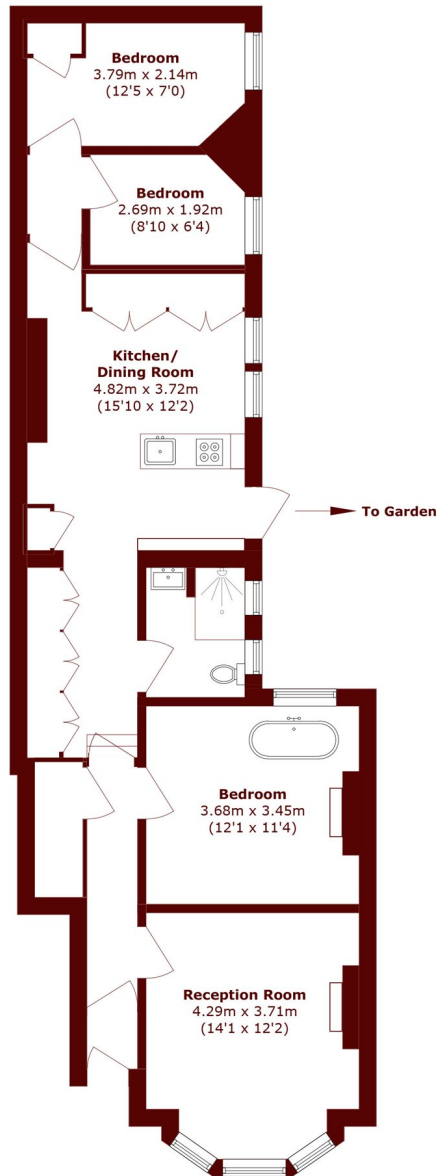


ABOUT THE PROPERTY

A beautifully presented two-bedroom garden flat set within a charming Victorian conversion. Occupying the ground floor and benefiting from its own private entrance, this unique home is suited to professional sharers or a small family. The property offers two exceptionally spacious double bedrooms, including a standout principal bedroom complete with a freestanding bath for a boutique hotel feel. There is also a separate reception room, a sleek contemporary shower room, and a bright open-plan kitchen/dining area fitted with integrated appliances. Further benefits include a separate utility room with both a washer and dryer, hardwood flooring throughout, and a private patio garden, ideal for outdoor dining and entertaining. The property is also HMO



STEP INSIDE LATCHMERE ROAD



Total area (approx.): 82.6 sq. m (889.1 sq. ft)

Battersea
020 7228 9292

Energy Rating: D We aim to make our particulars both accurate and reliable. However, they are not guaranteed; nor do they form part of an offer or contract. If you require clarification on any points then please contact us, especially if you're traveling some distance to view. Please note that appliances and heating systems have not been tested and therefore no warranties can be given as to their good working order

**MARSH &
PARSONS**