



## NEWSTEAD WAY, SW19

£3,995 per month

Townhouse  
Four bedrooms  
Two bathrooms  
Garage  
Off-street parking  
Energy rating: c

@marshandparsons  
marshandparsons.co.uk

MARSH &  
PARSONS



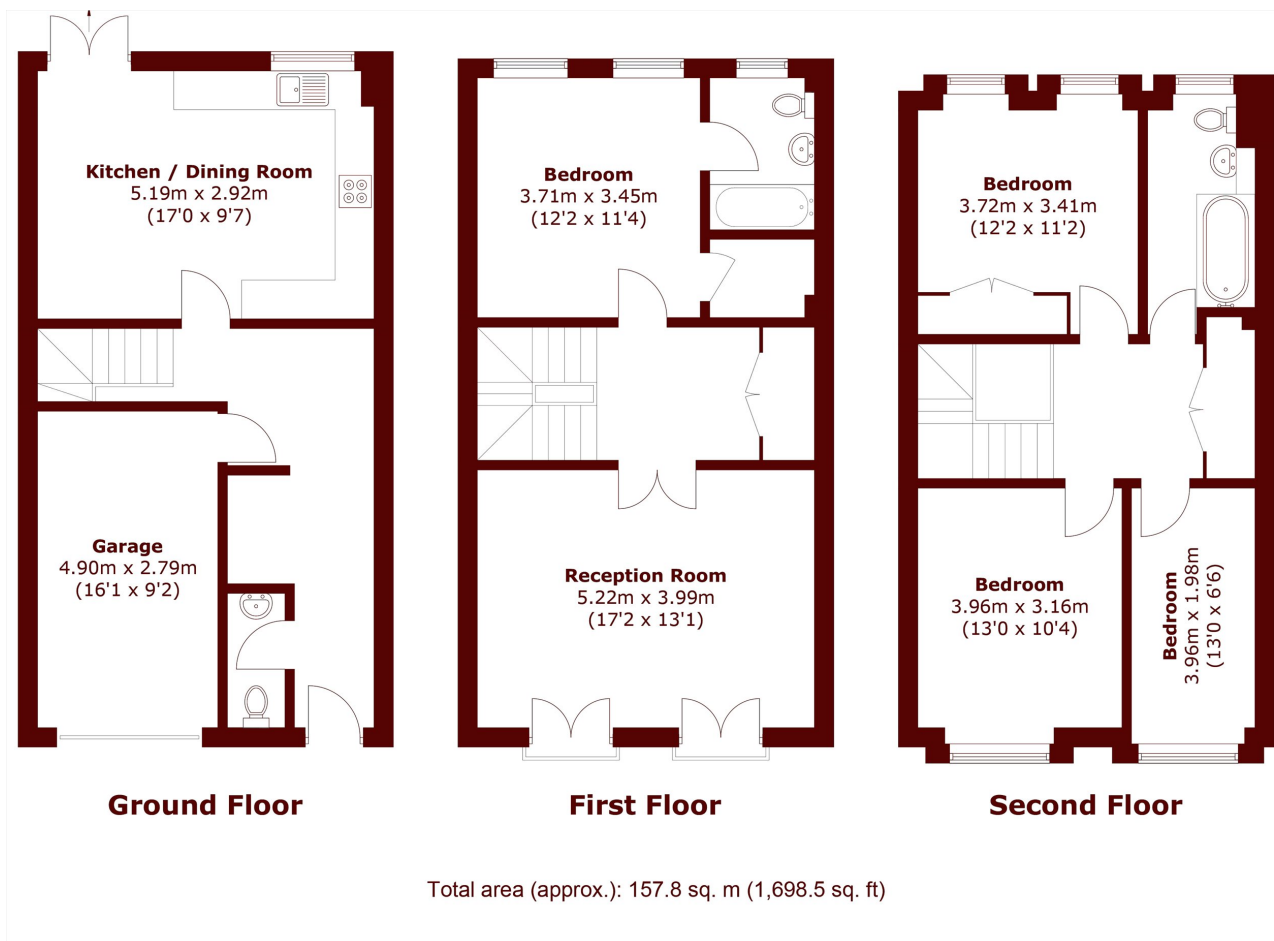
# ABOUT THE PROPERTY

A four bedroom terraced townhouse set over three floors offering a kitchen, dining room with patio doors to garden, reception room, principal bedroom with en suite, three further bedrooms and a family bathroom.

The property is situated on Newstead Way overlooking the All England Lawn Tennis Club. The property is within walking distance of Wimbledon Village and Wimbledon Common on a quiet residential road.



# STEP INSIDE NEWSTEAD WAY



Wimbledon  
020 8879 6661

Energy Rating: C We aim to make our particulars both accurate and reliable. However, they are not guaranteed; nor do they form part of an offer or contract. If you require clarification on any points then please contact us, especially if you're traveling some distance to view. Please note that appliances and heating systems have not been tested and therefore no warranties can be given as to their good working order

MARSH &  
PARSONS