



PUMP HOUSE CRESCENT, TW8

£625,000

Two bedrooms
Two bathrooms
9th floor
Private balcony
Concierge
Energy rating: c

@marshandparsons
marshandparsons.co.uk

MARSH &
PARSONS



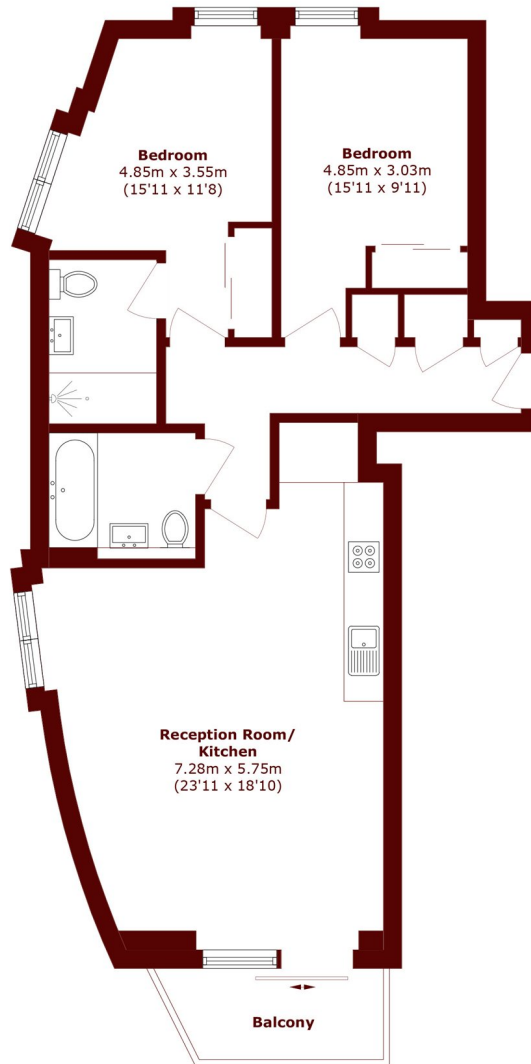
ABOUT THE PROPERTY

Situated in the central tower of this popular gated residential development. This large two bedroom two bathroom apartment spans over 900 Sqft of living space. Located on the 9th Floor with views south over Kew Gardens. It also has lift access and a long lease.

Hyperian Tower is located on pump house crescent moments from the River Thames in Brentford. It benefits from Chiswick High Road and Brentford High Street, which both have a fabulous array of shops, restaurants, cafes, bars and convenience stores.



STEP INSIDE PUMP HOUSE CRESCENT



Total area (approx.): 85.9 sq. m (924.6 sq. ft)
Balcony area (approx.): 4.9 sq. m (52.7 sq. ft)

Chiswick
020 8994 2556

Energy Rating: C We aim to make our particulars both accurate and reliable. However, they are not guaranteed; nor do they form part of an offer or contract. If you require clarification on any points then please contact us, especially if you're traveling some distance to view. Please note that appliances and heating systems have not been tested and therefore no warranties can be given as to their good working order

MARSH &
PARSONS