



SYCAMORE ROAD, SW19

£2,195 per month

Two bedrooms
Spacious lounge
Private patio
Communal gardens
Ground floor
Energy rating: d

@marshandparsons
marshandparsons.co.uk

MARSH &
PARSONS



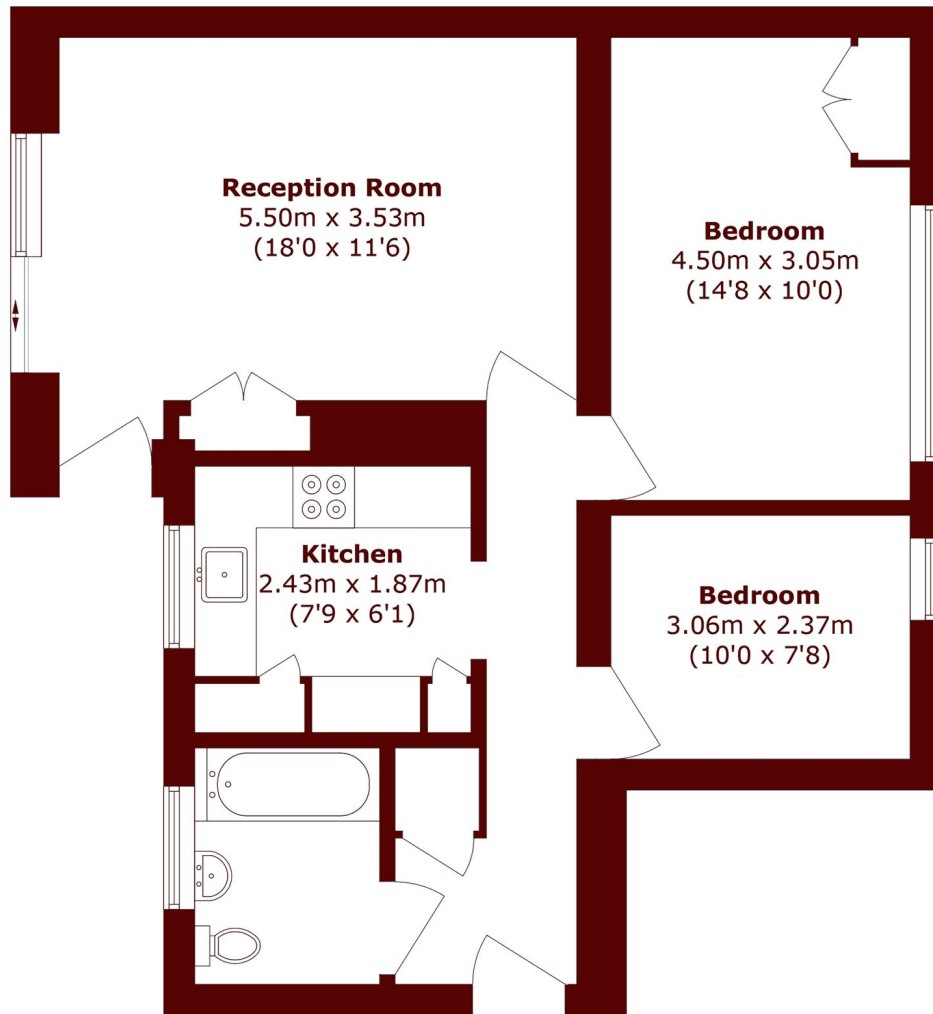
ABOUT THE PROPERTY

This ground floor two bedroom apartment offers a spacious lounge with doors to a private patio and communal gardens. A separate kitchen and bathroom with bath and shower over.

The property is located in a popular cul-de-sac between Wimbledon Common and Cannizaro Park and a short walk from Wimbledon Village.



STEP INSIDE SYCAMORE ROAD



Total area (approx.): 65.6 sq. m (706.1 sq. ft)

Wimbledon
020 8879 6661

Energy Rating: D We aim to make our particulars both accurate and reliable. However, they are not guaranteed; nor do they form part of an offer or contract. If you require clarification on any points then please contact us, especially if you're traveling some distance to view. Please note that appliances and heating systems have not been tested and therefore no warranties can be given as to their good working order

MARSH &
PARSONS