



## REGENCY STREET, SW1P

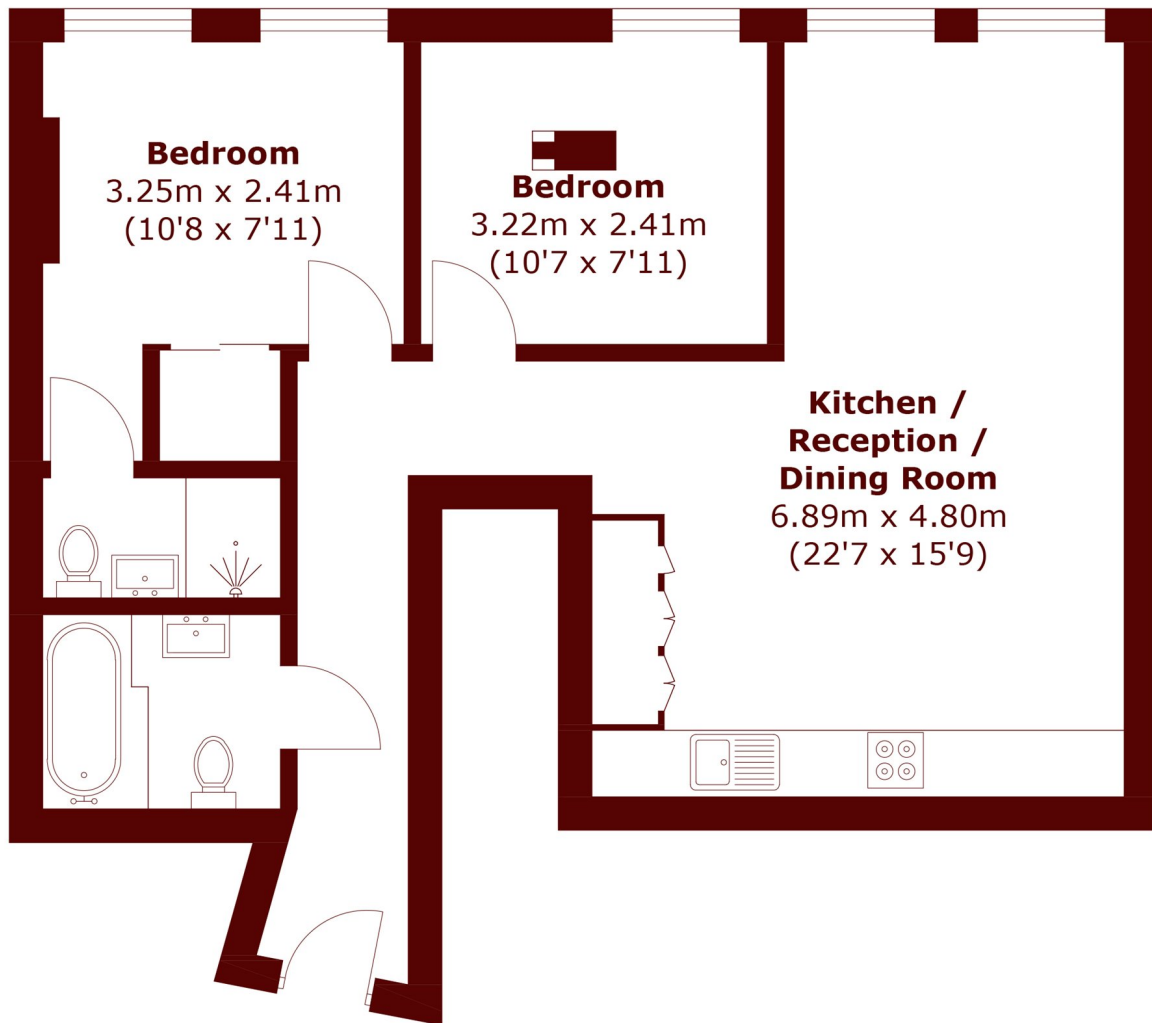
£807 per week

A beautiful two double bedroom, two bathroom modern apartment set on the first floor of this sought-after development. Further benefits include an open plan kitchen and private allocated underground parking.

Two double bedrooms  
Two bathrooms  
Wooden flooring

Underground parking  
Lift  
Energy rating: c

# STEP INSIDE REGENCY STREET



## First Floor

Total area (approx.): 64.1 sq. m (689.9 sq. ft)

Pimlico & Westminster  
020 7828 8100

Energy Rating: C We aim to make our particulars both accurate and reliable. However, they are not guaranteed; nor do they form part of an offer or contract. If you require clarification on any points then please contact us, especially if you're traveling some distance to view. Please note that appliances and heating systems have not been tested and therefore no warranties can be given as to their good working order

MARSH &  
PARSONS