



WOODLAND CRESCENT, SE10

£445,000

Duplex apartment

Two bedrooms

Two balconies

Incredible views

Off-street parking

Energy rating: c

@marshandparsons
marshandparsons.co.uk

MARSH &
PARSONS



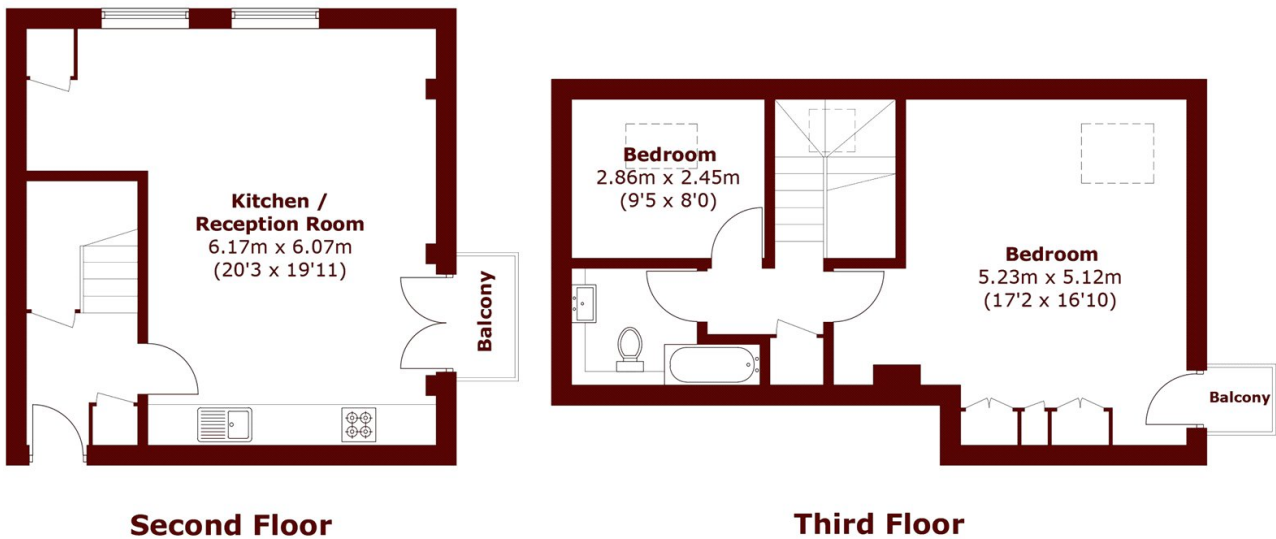
ABOUT THE PROPERTY

Top floor duplex apartment with incredible views from two small balconies. There is a secure off-street parking space located in the gated car park. One of the standout features being the main bedroom with its very high ceilings, dual aspect windows and box balcony offering views of the city, the Shard and BT tower. There is a further double bedroom as well as a modern bathroom suite. On the level below, you can enjoy a large living space with a dedicated dining area and an open plan fitted kitchen.

Situated moments away from Maze Hill mainline station and Greenwich's royal park. Greenwich town centre is just a short walk away for the Cutty Sark DLR station.



STEP INSIDE WOODLAND CRESCENT



Total area (approx.): 79.4 sq. m (854.7 sq. ft)
Balcony area (approx.): 2.5 sq. m (26.9 sq. ft)

Greenwich
020 8312 8312

Energy Rating: C We aim to make our particulars both accurate and reliable. However, they are not guaranteed; nor do they form part of an offer or contract. If you require clarification on any points then please contact us, especially if you're traveling some distance to view. Please note that appliances and heating systems have not been tested and therefore no warranties can be given as to their good working order

MARSH &
PARSONS