



Bickenhall Street, W1U

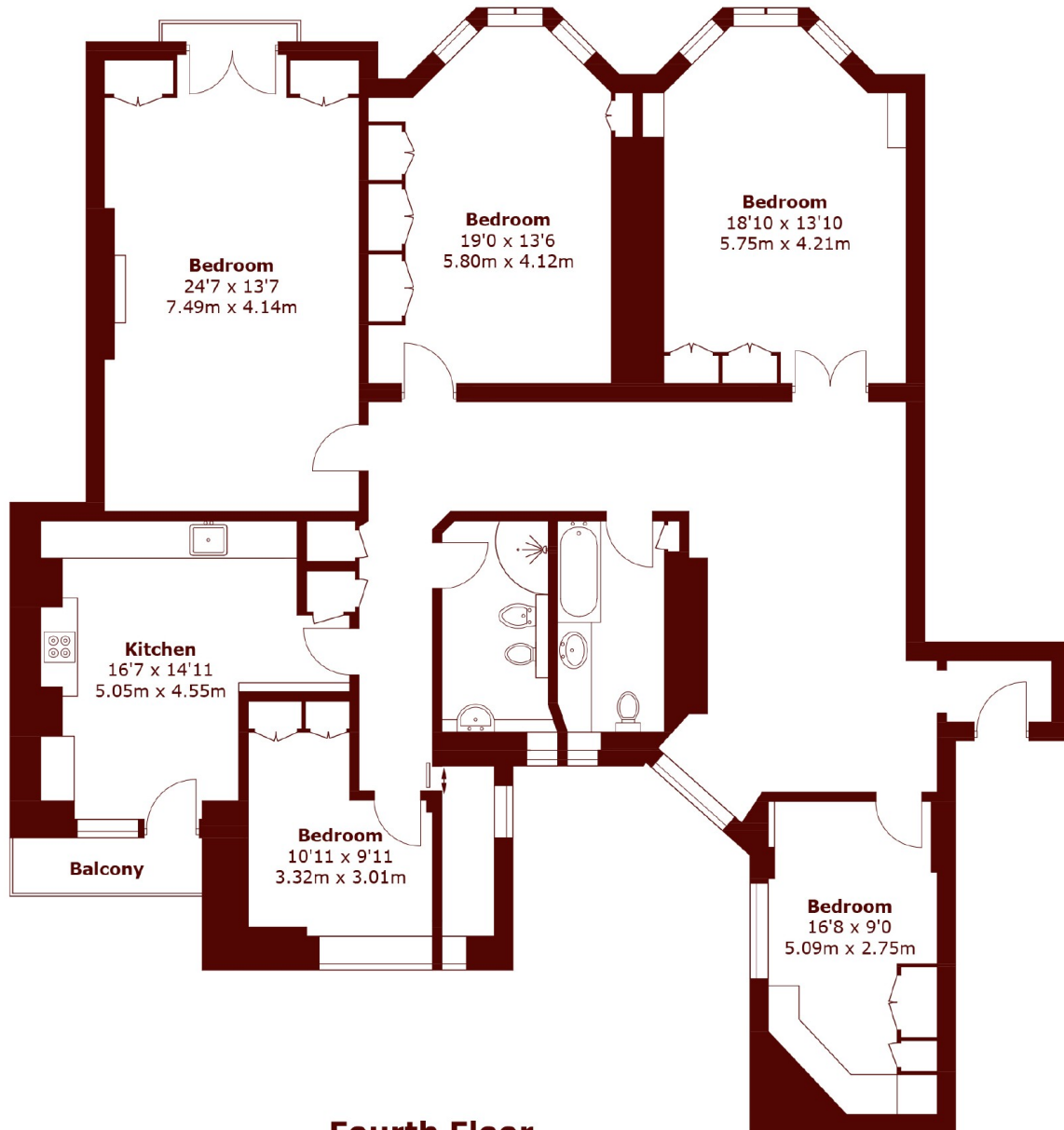
£1,615 per week (£7,497 pcm)



- Four Bedrooms
- Fifth Floor with Lift

- Porter
- Wood Floors

- Heating and Hot Water Inc.
- Separate Eat in Kitchen



Fourth Floor

Total area (approx.): 185.0 sq. m (1,991.1 sq. ft)

Balcony: 2.8 sq. m (30.1 sq. ft)

Marsh & Parsons Marylebone & Mayfair

94 Baker Street, London,
W1U 6FZ
020 7935 1775