



Gloucester Square, W2

£10,000,000

6 5 4 C

- Air conditioning throughout
- Underfloor heating
- Passenger lift
- Parquet flooring
- Gaggenau appliances
- Alexa-controlled technology





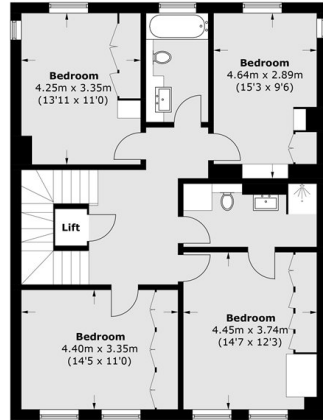
ABOUT THE PROPERTY

Presented in a contemporary style, this exquisite, newly redeveloped freehold house has six bedrooms, five bathrooms, two additional guest WC's and a self-contained nanny/guest apartment. The ground floor boasts an open plan kitchen with bespoke marble finishes, top-of-the-line Gaggenau appliances and a wine fridge. There is a separate formal dining room and a chef's kitchen, perfect for hosting dinner parties. The main reception room on the first floor has access to a balcony, alongside the principal bedroom complete with a walk-in dressing room and en suite bathroom. The second floor houses the remaining bedrooms, with a further bedroom or office on the top floor, with vaulted ceilings and opening onto a roof terrace, ideal for al-fresco dining. The lower ground floor contains the gym, utility room and the separate apartment. Presented to the highest standard, additional features include; air conditioning, underfloor heating, a lift, parquet flooring, Alexa-controlled smart home technology.

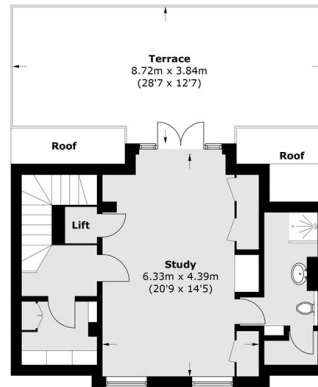


Gloucester Square is one of the largest private garden squares (1.6 acres) within the Hyde Park estate and has been for the exclusive use of residents since the late 1880s. It's moments from the green spaces of Hyde Park, Paddington Station and Connaught Village.

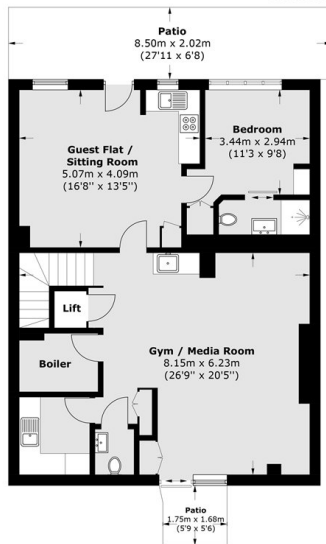




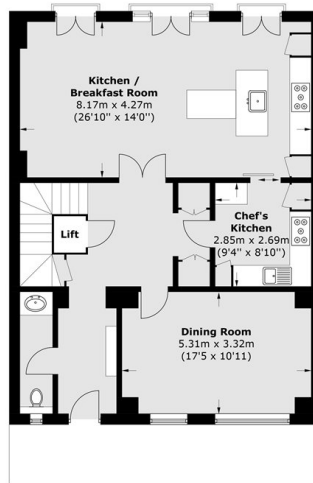
Second Floor



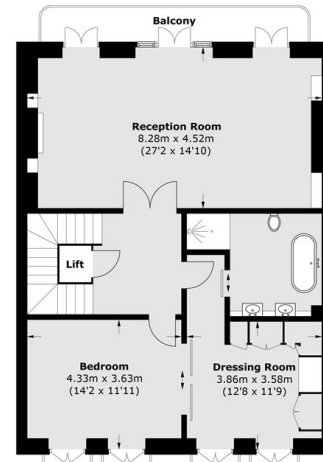
Third Floor



Lower Ground Floor



Ground Floor



First Floor

Total area (approx.): 402.5 sq. m (4,332.5 sq. ft)
 (Including Third Floor Lift & Excluding Other Lifts)
 Terrace / Balcony: 38.3 sq. m (412.3 sq. ft)

Marsh & Parsons Marylebone & Mayfair

94 Baker Street, London,
 W1U 6FZ
 020 7935 1775