



## CAMPBELL CLOSE, SE18

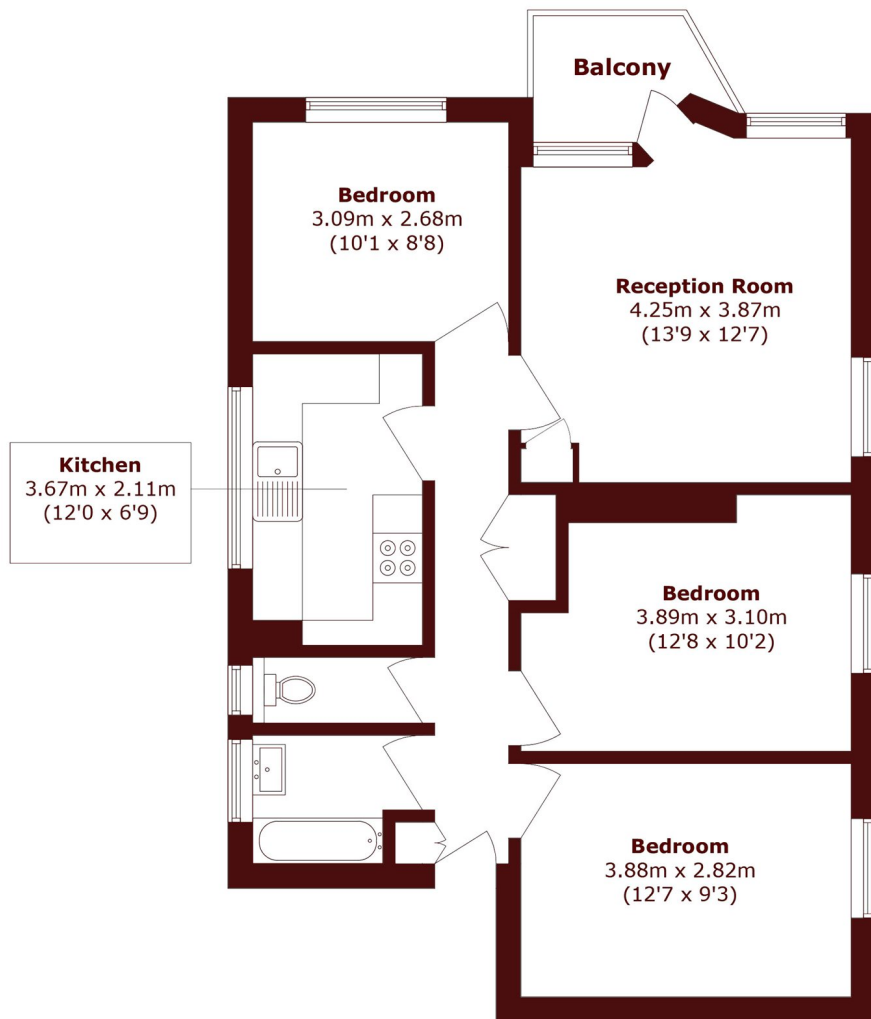
£1,900 per month

Spacious three bedroom first floor purpose-built flat in good condition, ideally located near Shrewsbury Park. Features a bright, spacious lounge with laminate flooring and balcony access, a modern fitted kitchen with

1st Floor apartment  
Three bedrooms  
Spacious lounge

Fitted kitchen  
Communal garden  
Energy rating: d

# STEP INSIDE CAMPBELL CLOSE



## First Floor

Total area (approx.): 69.8 sq. m (751.3 sq. ft)

Balcony area (approx.): 2.9 sq. m (31.2 sq. ft)

Lee  
020 8296 1628

Energy Rating: D We aim to make our particulars both accurate and reliable. However, they are not guaranteed; nor do they form part of an offer or contract. If you require clarification on any points then please contact us, especially if you're traveling some distance to view. Please note that appliances and heating systems have not been tested and therefore no warranties can be given as to their good working order

MARSH &  
PARSONS