



WIMBLEDON HILL ROAD, SW19

£3,500 per month

Two bedrooms
Two bathrooms
Private large terrace
Underground parking
Communal gardens
Energy rating: c

@marshandparsons
marshandparsons.co.uk

MARSH &
PARSONS



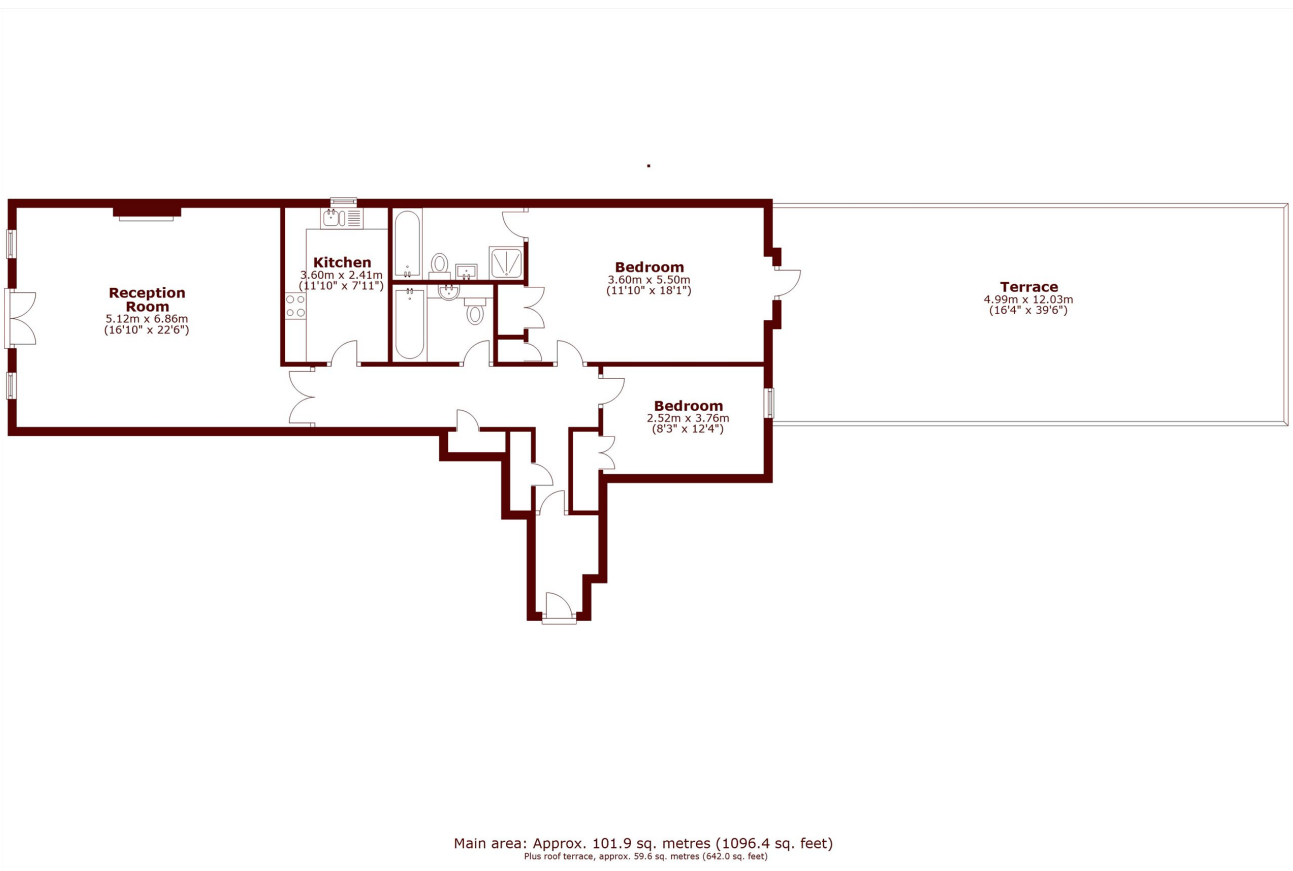
ABOUT THE PROPERTY

A raised two bedroom ground floor apartment offering a spacious sitting room, fitted kitchen, principal bedroom with en suite bathroom and large terrace, further double bedroom, a further bathroom, communal gardens and underground parking.

This purpose-built apartment is located close to Wimbledon town centre and station.



STEP INSIDE WIMBLEDON HILL ROAD



Wimbledon
020 8879 6661

Energy Rating: C We aim to make our particulars both accurate and reliable. However, they are not guaranteed; nor do they form part of an offer or contract. If you require clarification on any points then please contact us, especially if you're traveling some distance to view. Please note that appliances and heating systems have not been tested and therefore no warranties can be given as to their good working order

MARSH &
PARSONS