



HAY HILL, W1J

£890,000

This stunning double bedroom apartment is flooded with natural light with expansive views across Mayfair. Situated on the top floor the property (w/lift) is ultra-quiet and comprises a large reception room with

One Bedroom

Porter

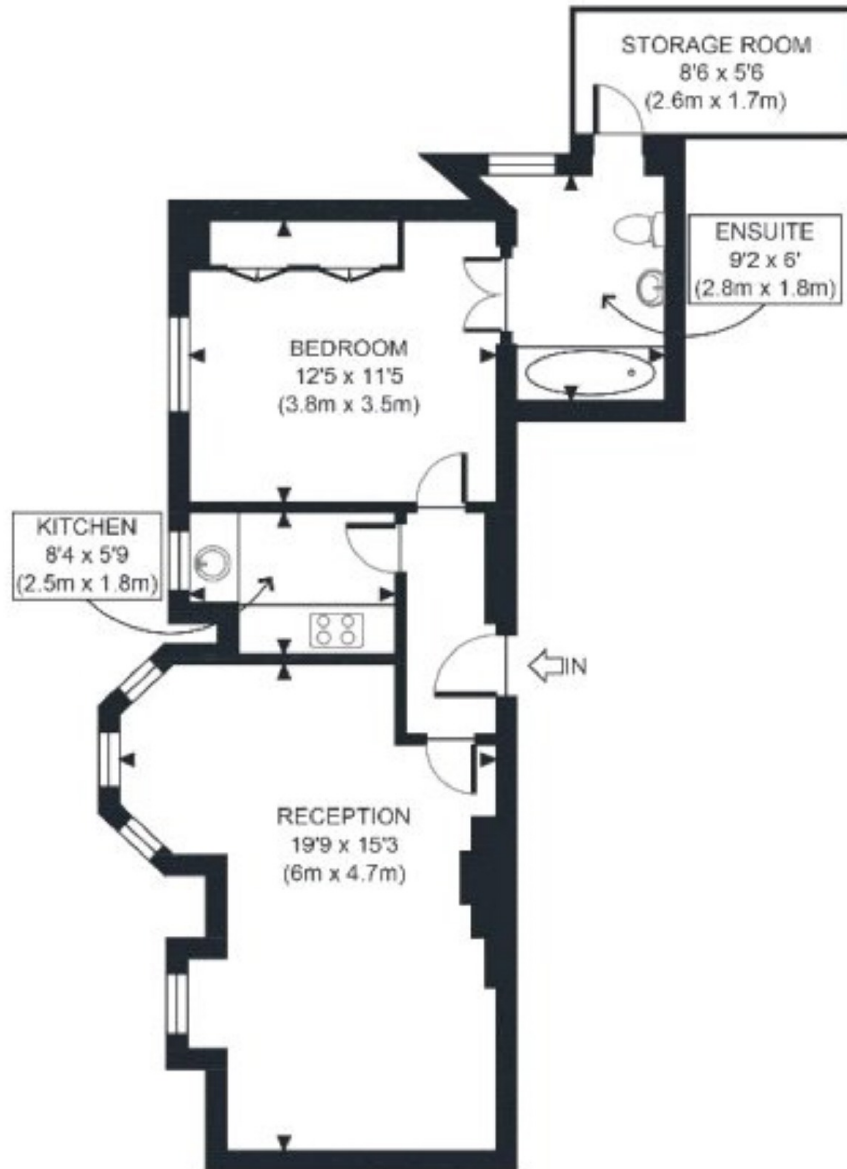
Expansive Views Across Mayfair

Lift

Quiet Location

Green Park Station

STEP INSIDE HAY HILL



SEVENTH FLOOR
GROSS INTERNAL
FLOOR AREA 590 SQ FT

Marylebone & Mayfair
020 7935 1775

Energy Rating: G We aim to make our particulars both accurate and reliable. However, they are not guaranteed; nor do they form part of an offer or contract. If you require clarification on any points then please contact us, especially if you're traveling some distance to view. Please note that appliances and heating systems have not been tested and therefore no warranties can be given as to their good working order

MARSH &
PARSONS