



## Kensington Gardens Square, W2

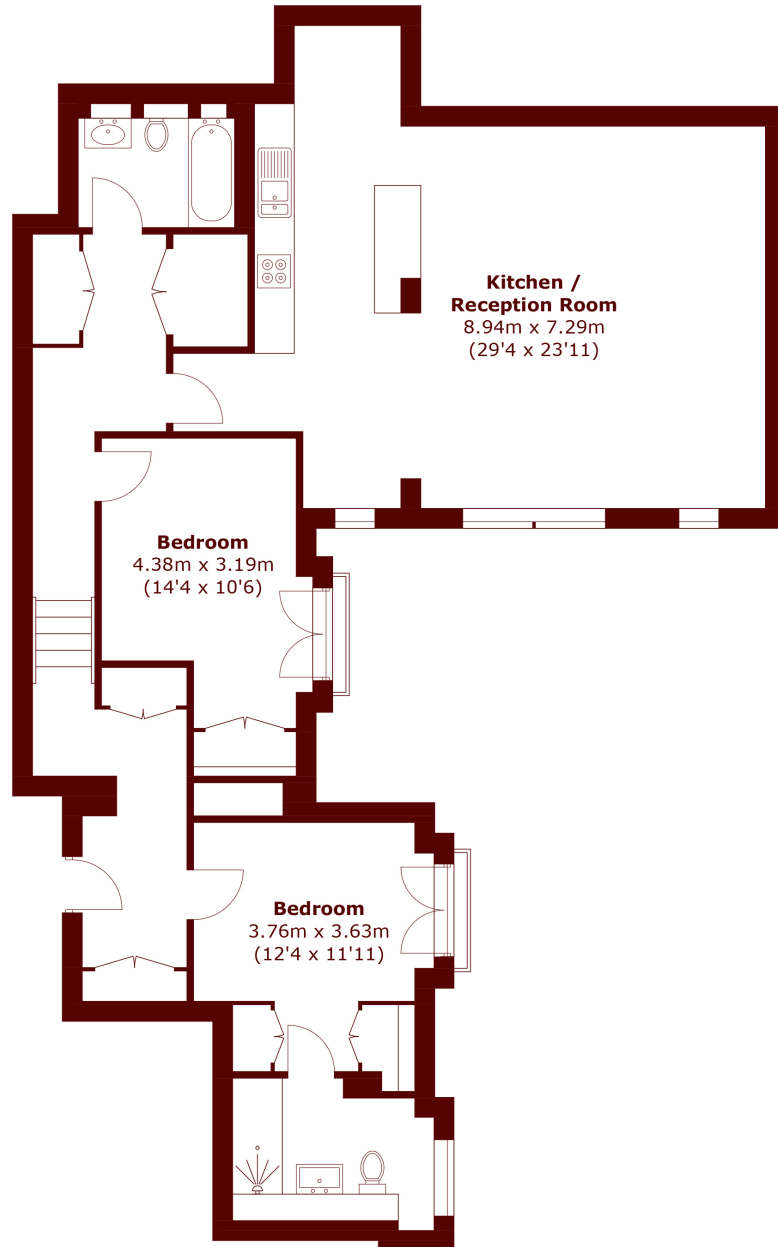
£1,795 per week (£7,778 pcm)

 2  2  1  B

- Two-bedroom
- Two-bathroom

- Lateral apartment
- 24hr porter

- Exclusive development
- Wooden flooring



Total area (approx.): 108.8 sq. m (1,171.1 sq. ft)

## Marsh & Parsons Notting Hill

2-6 Kensington Park Road,  
London, W11 3BU  
020 7313 2890