



CAMPBELL CLOSE, SE18

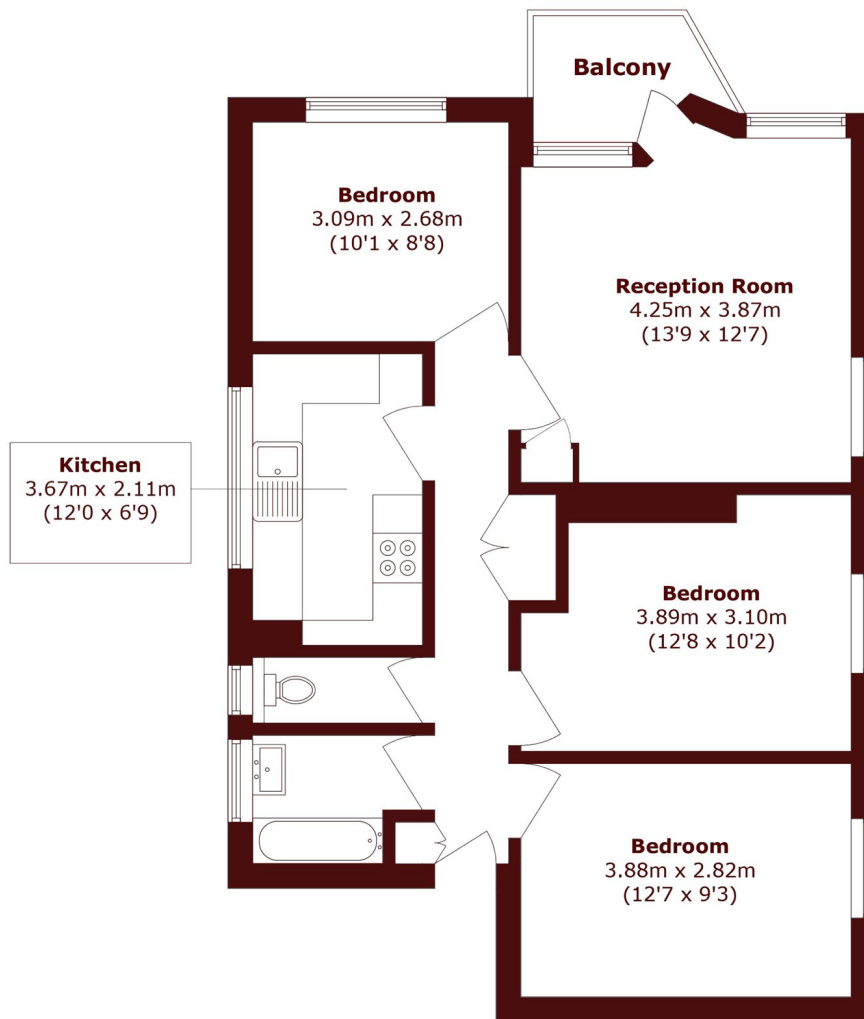
£1,800 per month

Spacious three bedroom first floor purpose-built flat in good condition, ideally located near Shrewsbury Park.

1st Floor apartment
Three bedrooms
Spacious lounge

Fitted kitchen
Communal garden
Energy rating: d

STEP INSIDE CAMPBELL CLOSE



First Floor

Total area (approx.): 69.8 sq. m (751.3 sq. ft)

Balcony area (approx.): 2.9 sq. m (31.2 sq. ft)

Lee
020 8296 1628

Energy Rating: D We aim to make our particulars both accurate and reliable. However, they are not guaranteed; nor do they form part of an offer or contract. If you require clarification on any points then please contact us, especially if you're traveling some distance to view. Please note that appliances and heating systems have not been tested and therefore no warranties can be given as to their good working order

MARSH &
PARSONS