



FORTHBRIDGE ROAD, SW11

£1,150,000

Three double bedrooms

Two bathrooms

Victorian

Share of freehold

Beautiful features

Close to common

@marshandparsons
marshandparsons.co.uk

MARSH &
PARSONS

ABOUT THE PROPERTY

This stunning split level Victorian apartment offers so much more than your standard period conversion. The living room is adorned with beautiful features, such as the exquisitely restored cornicing, the fireplace and a vaulted ceiling in the front bay which dramatically transforms the space altogether. The open kitchen has an island and breakfast bar, a perfect setup for entertaining.

Forthbridge Road is quietly tucked away off Clapham Common North Side. There is easy access to Lavender Hill and Northcote Road, with a wide selection of bars,





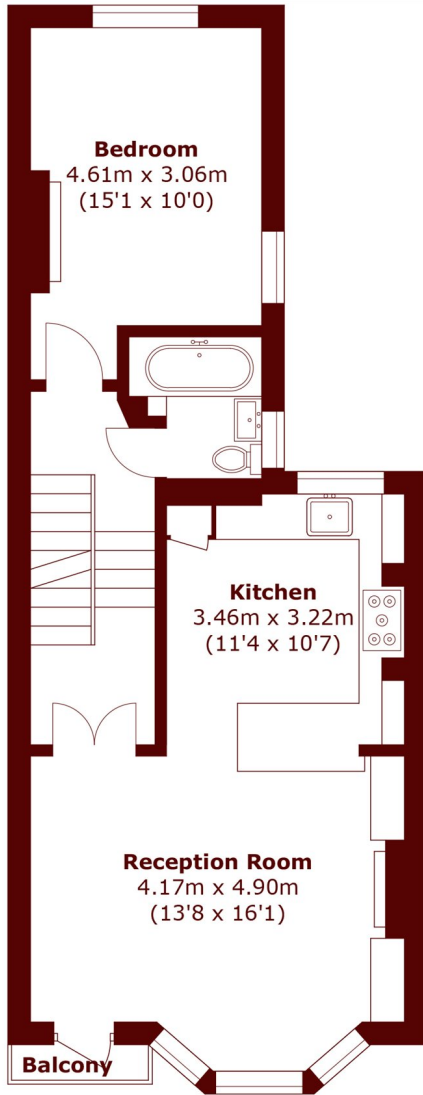


FURTHER DETAILS

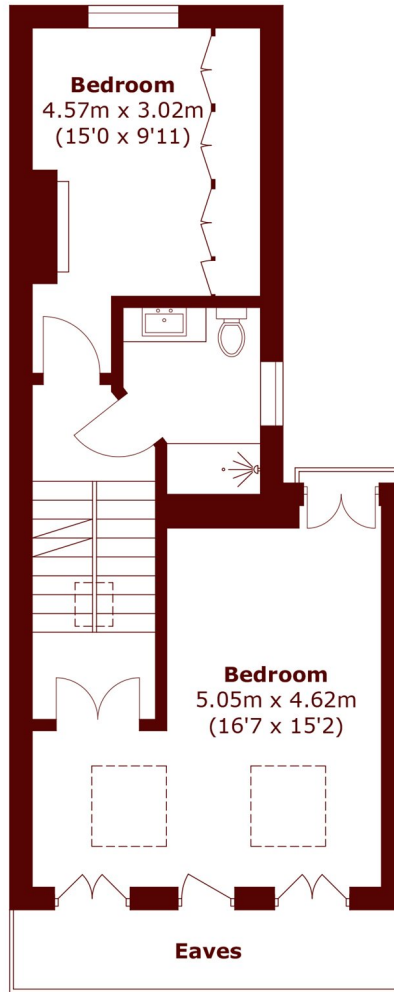
To the rear of the hallway, there is a large double bedroom and a three piece family bathroom. Up the stairs, a second bedroom with custom built wardrobes, still adequate for a double bed or for its current use as a home office/dressing room. On the top floor, the principle bedroom is complete with a standalone bath and a Juliet balcony. Further to this there is private sunny terrace to enjoy in the summer months.



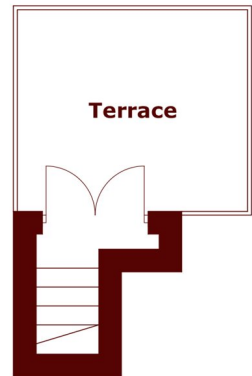
STEP INSIDE FORTHBRIDGE ROAD



First Floor



Second Floor



Third Floor

Total area (approx.): 99.9 sq. m (1,075.3 sq. ft)
(Excluding Eaves)
Terrace: 9.0 sq. m (96.9 sq. ft)

Battersea
020 7326 9920

Energy Rating: D We aim to make our particulars both accurate and reliable. However, they are not guaranteed; nor do they form part of an offer or contract. If you require clarification on any points then please contact us, especially if you're traveling some distance to view. Please note that appliances and heating systems have not been tested and therefore no warranties can be given as to their good working order

**MARSH &
PARSONS**