



BRASENOSE DRIVE, SW13

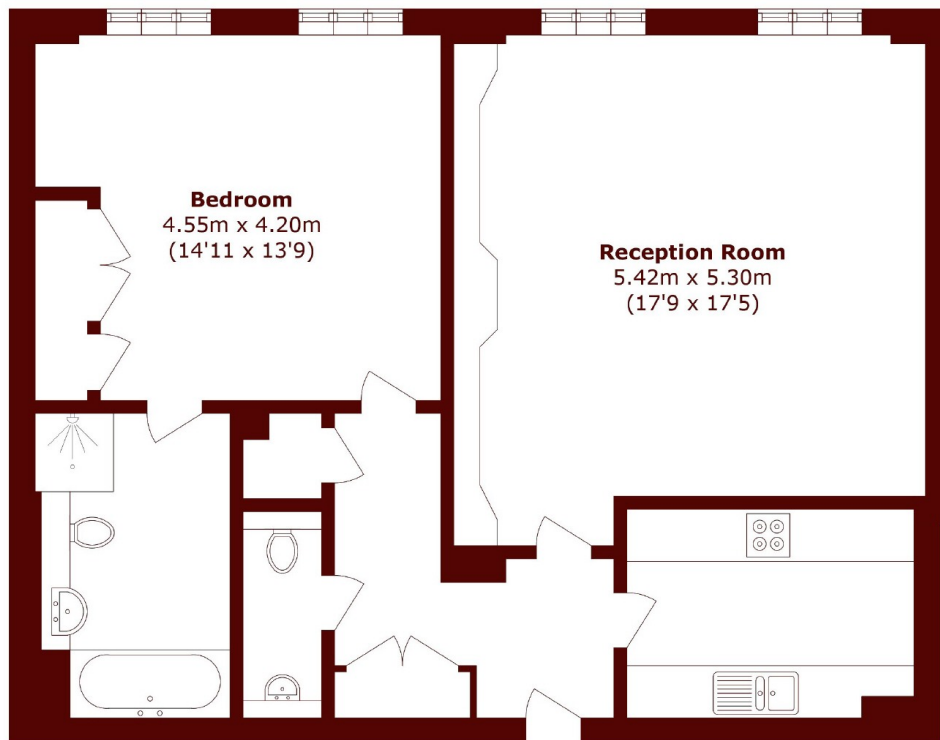
£599,999

Marsh & Parsons are delighted to offer this one bedroom flat, with an allocated parking space, situated in the sought after Harrods Village Development.

One bedroom
Gated development
Lift access

Chain free
Allocated parking space
Harrods Village Development

STEP INSIDE BRASENOSE DRIVE



Total area (approx.): 79.9 sq. m (860 sq. ft)

Barnes & East Sheen
020 8563 8333

Energy Rating: C We aim to make our particulars both accurate and reliable. However, they are not guaranteed; nor do they form part of an offer or contract. If you require clarification on any points then please contact us, especially if you're traveling some distance to view. Please note that appliances and heating systems have not been tested and therefore no warranties can be given as to their good working order

**MARSH &
PARSONS**