



PALMERSTON ROAD, SW19

£3,750 per month

Four bedrooms
Two bathrooms
Double reception room
Kitchen/breakfast room
West-facing garden
Energy rating: c

@marshandparsons
marshandparsons.co.uk

MARSH &
PARSONS



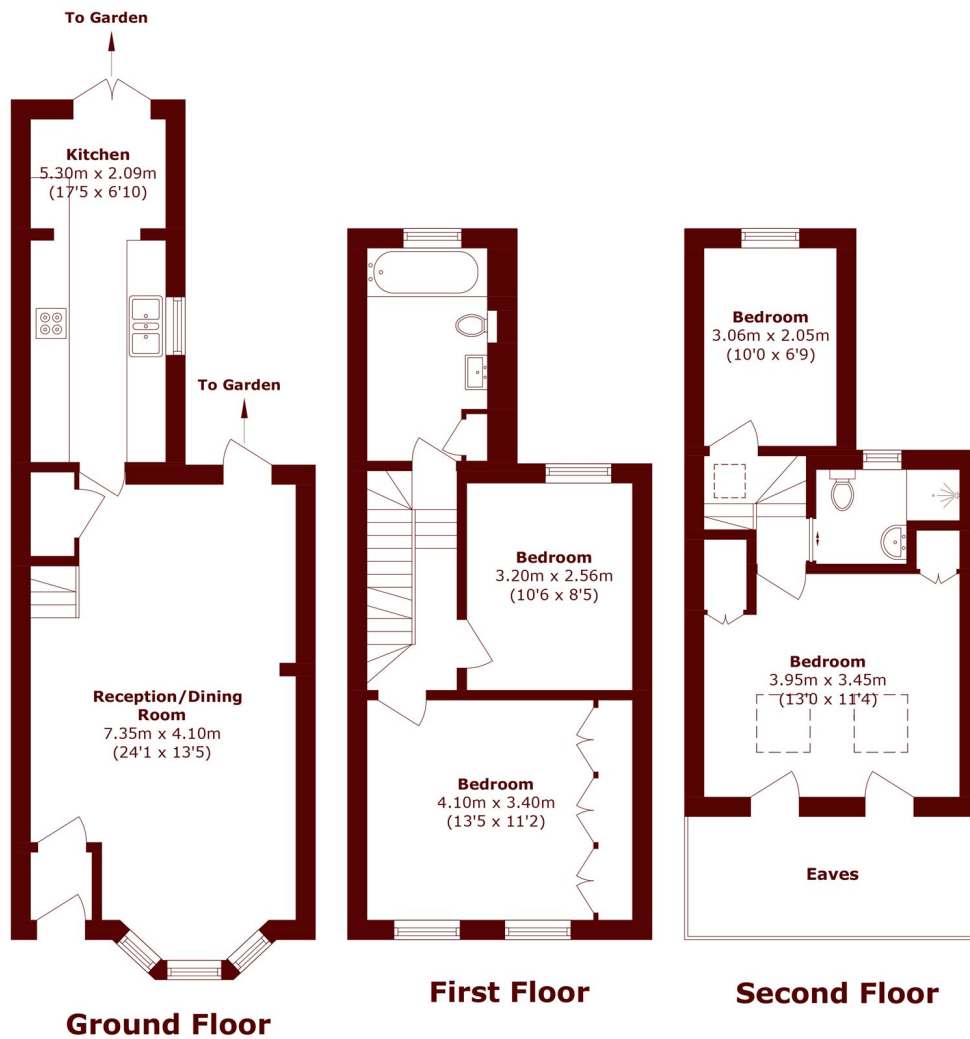
ABOUT THE PROPERTY

A four bedroom terraced house available to let in central Wimbledon. On the ground floor there is a very good size double reception room with space for dining table plus a door to the garden. The first floor offers two double bedrooms, one with fitted wardrobes and a contemporary family bathroom. On the top floor the master bedroom has an en suite shower room and there is a further bedroom on this floor.

Palmerston Road is located in the popular Ministers area of Wimbledon within walking distance of the National Rail and District Line station in the town centre and the Northern line at South Wimbledon.



STEP INSIDE PALMERSTON ROAD



Total area (approx.): 102.4 sq. m (1102.2 sq. ft)
(Excluding Eaves)

Wimbledon
020 8879 6661

Energy Rating: C We aim to make our particulars both accurate and reliable. However, they are not guaranteed; nor do they form part of an offer or contract. If you require clarification on any points then please contact us, especially if you're traveling some distance to view. Please note that appliances and heating systems have not been tested and therefore no warranties can be given as to their good working order

MARSH &
PARSONS