

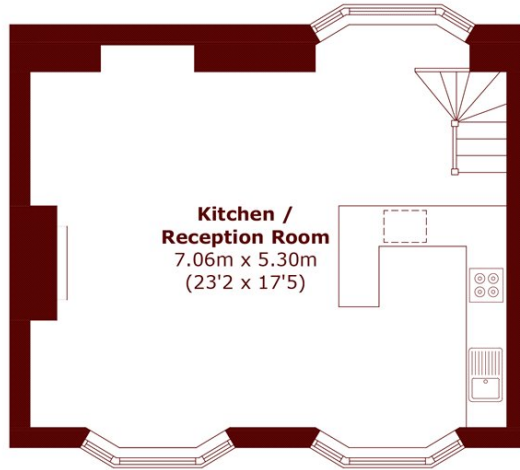


## Ossington Street, W2

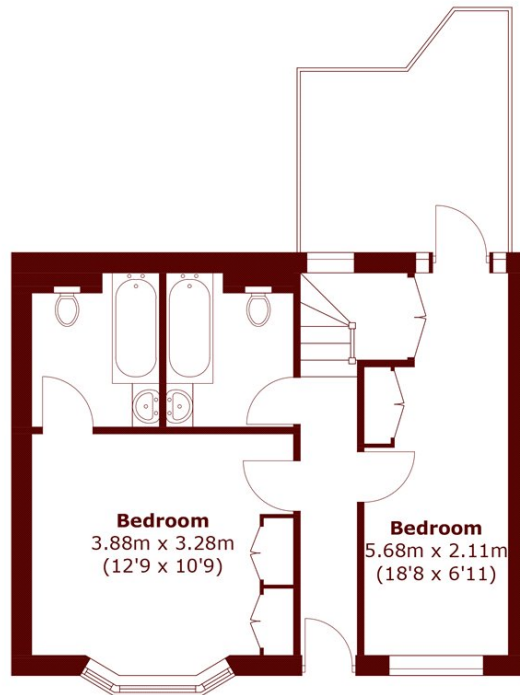
£850 per week (£3,683 pcm)



- House
- High Ceilings
- Two Bedroom
- Two Bathrooms
- Patio Garden
- Wooden Flooring



**Raised Ground Floor**



**Lower Ground Floor**

Total area (approx.): 81.8 sq. m (880.5 sq. ft)

**Marsh & Parsons Notting Hill**

2-6 Kensington Park Road,  
London, W11 3BU  
020 7313 2890