



MONKS PARK, HA9

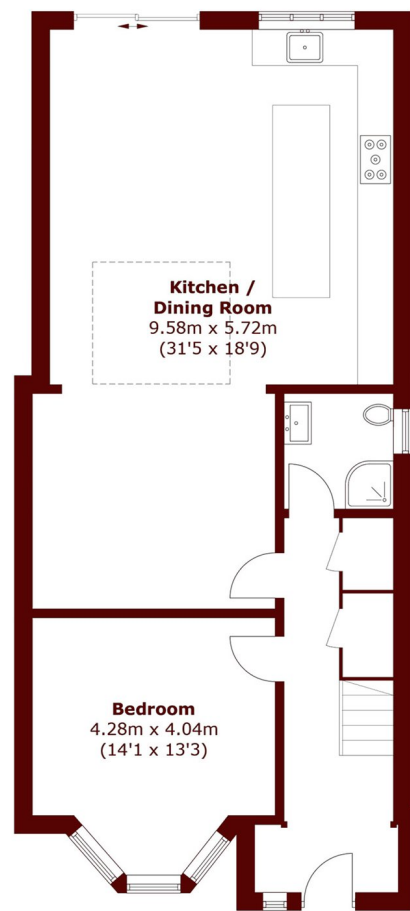
£4,000 per month

This five bedroom, three bathroom, semi-detached family house offers generous living space across three floors. It features a spacious open-plan reception room with an island kitchen, ideal for cooking and entertaining.

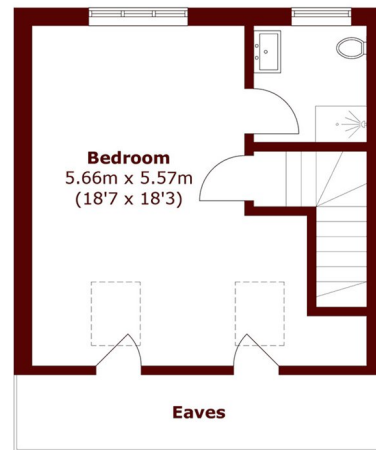
Semi-detached
Off-street Parking
Private Rear Garden

Island Kitchen
Five Bedrooms
Three Bathrooms

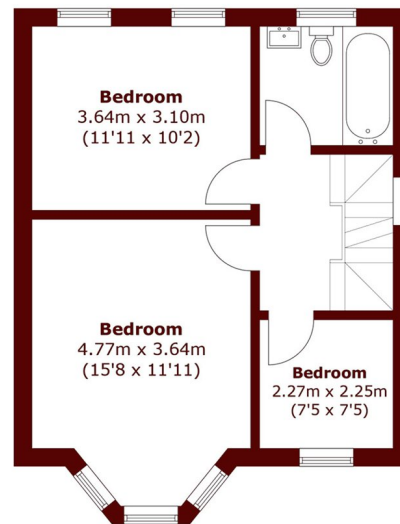
STEP INSIDE MONKS PARK



Ground Floor



Second Floor



First Floor

Total area (approx.): 157.5 sq. m (1,695.2 sq. ft)
(Excluding Eaves)

Willesden Green
020 8939 1780

Energy Rating: C We aim to make our particulars both accurate and reliable. However, they are not guaranteed; nor do they form part of an offer or contract. If you require clarification on any points then please contact us, especially if you're traveling some distance to view. Please note that appliances and heating systems have not been tested and therefore no warranties can be given as to their good working order

**MARSH &
PARSONS**