



DUCHESS WALK, SE1

£3,550 per month

One Bedroom
One Bathroom
Open-Plan
Balcony
Gym + Spa
24 Hour Concierge

@marshandparsons
marshandparsons.co.uk

MARSH &
PARSONS



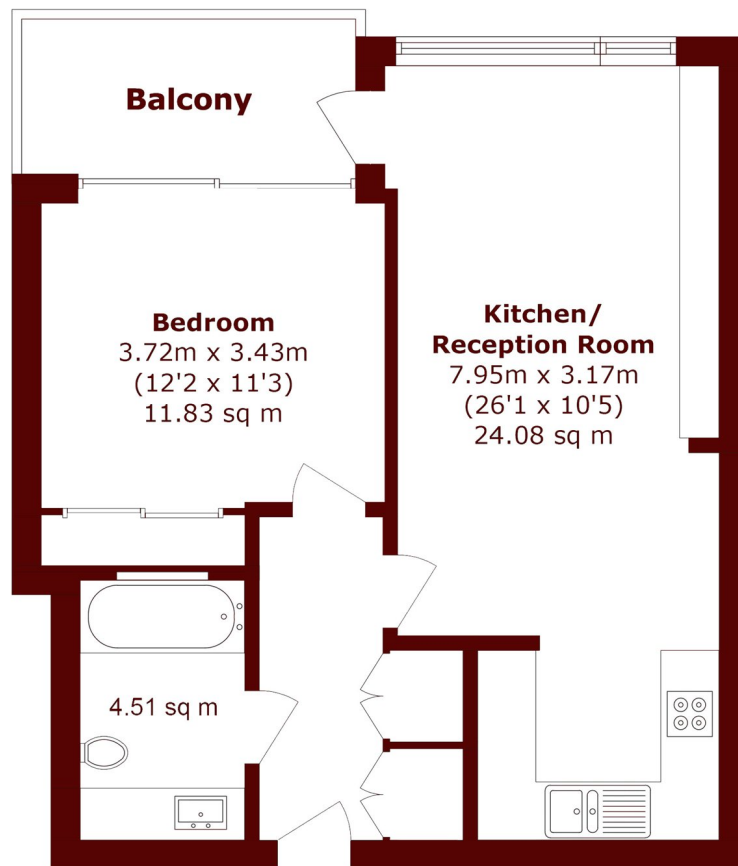
ABOUT THE PROPERTY

This beautifully presented one bedroom apartment is located within Tudor House, part of the prestigious One Tower Bridge development. The property offers a spacious open plan living area, a modern kitchen with integrated appliances, a well proportioned double bedroom, and a contemporary bathroom finished to a high standard. Large windows allow for plenty of natural light, creating a bright and welcoming atmosphere throughout the home.

Duchess Walk enjoys an enviable position moments from Tower Bridge, the River Thames, and the cultural attractions of the South Bank. Residents benefit from easy access to a wide selection of restaurants, shops, and



STEP INSIDE DUCHESS WALK



Total area (approx.): 49.2 sq. m (529.5 sq. ft)

Balcony Total (approx.): 5.0 sq. m (53.8 sq. ft)

Kennington
020 7932 2920

Energy Rating: C We aim to make our particulars both accurate and reliable. However, they are not guaranteed; nor do they form part of an offer or contract. If you require clarification on any points then please contact us, especially if you're traveling some distance to view. Please note that appliances and heating systems have not been tested and therefore no warranties can be given as to their good working order

**MARSH &
PARSONS**