



PENROSE MEWS, SW6

£4,250 per week

A rare and exciting opportunity to rent a mews house in this new development in Fulham. Finished to an immaculate standard and with private fibre high-speed internet, this stunning three-bedroom house

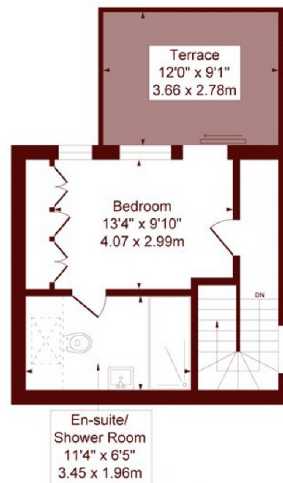
Gated Mews
3 Double Bedrooms

2 Bathrooms
Modern

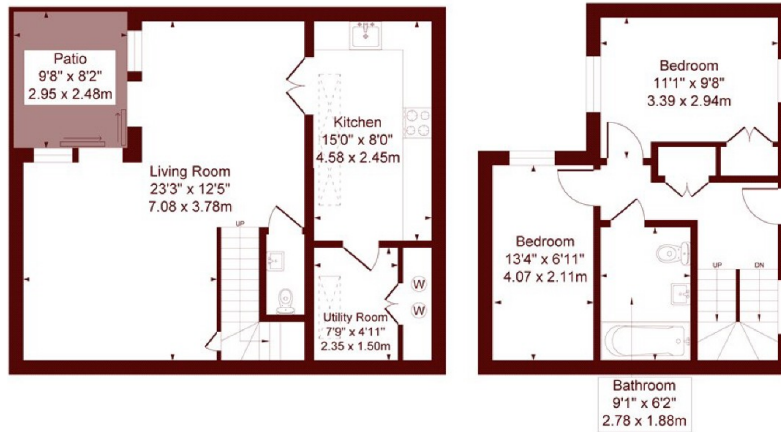
STEP INSIDE PENROSE MEWS

Lillie Road

Approximate Gross Internal Area = 112 sq m / 1205 sq ft



First Floor



Lower Ground Floor

Ground Floor

Measured in accordance with RICS guidelines. Every attempt is made to ensure accuracy
However all measurements are approximate.
The Floor plan is illustrative purposes Only and is not to scale
ELLIE CLAIRE PHOTOGRAPHY LTD

Bishops Park
020 7368 2480

Energy Rating: We aim to make our particulars both accurate and reliable. However, they are not guaranteed; nor do they form part of an offer or contract. If you require clarification on any points then please contact us, especially if you're traveling some distance to view. Please note that appliances and heating systems have not been tested and therefore no warranties can be given as to their good working order

MARSH &
PARSONS