



## BRONDES BURY ROAD, NW6

£2,950 per month

Three double bedrooms  
Wood floors throughout  
Recently redecorated  
Separate Kitchen

# ABOUT THE PROPERTY

A charming three double bedroom flat on the upper floor of a period conversion located in the heart of Queens Park. The property comprises wood floors throughout, a separate fully fitted kitchen, a spacious and bright reception room, a modern family bathroom and three large double bedrooms.

Brondesbury Road is a beautiful tree lined street in the heart of Queens Park and is perfectly located for the underground at Queens Park Station and the amenities of the Salusbury Road.

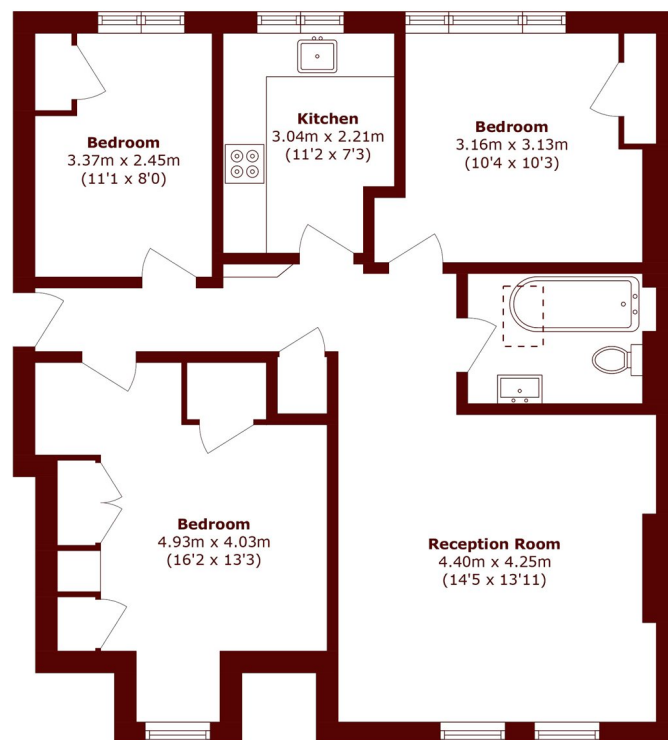








# STEP INSIDE BRONDESURY ROAD



Total area (approx.): 78.1 sq. m (840.6 sq. ft)

Queen's Park  
020 7871 5050

Energy Rating: We aim to make our particulars both accurate and reliable. However, they are not guaranteed; nor do they form part of an offer or contract. If you require clarification on any points then please contact us, especially if you're traveling some distance to view. Please note that appliances and heating systems have not been tested and therefore no warranties can be given as to their good working order

MARSH &  
PARSONS