



## COFFERDAM WAY, SE8

£625,000

Modern apartment  
Bright and spacious  
Three bedrooms  
Two bathrooms  
Large private balcony  
Energy rating: b

@marshandparsons  
marshandparsons.co.uk

MARSH &  
PARSONS



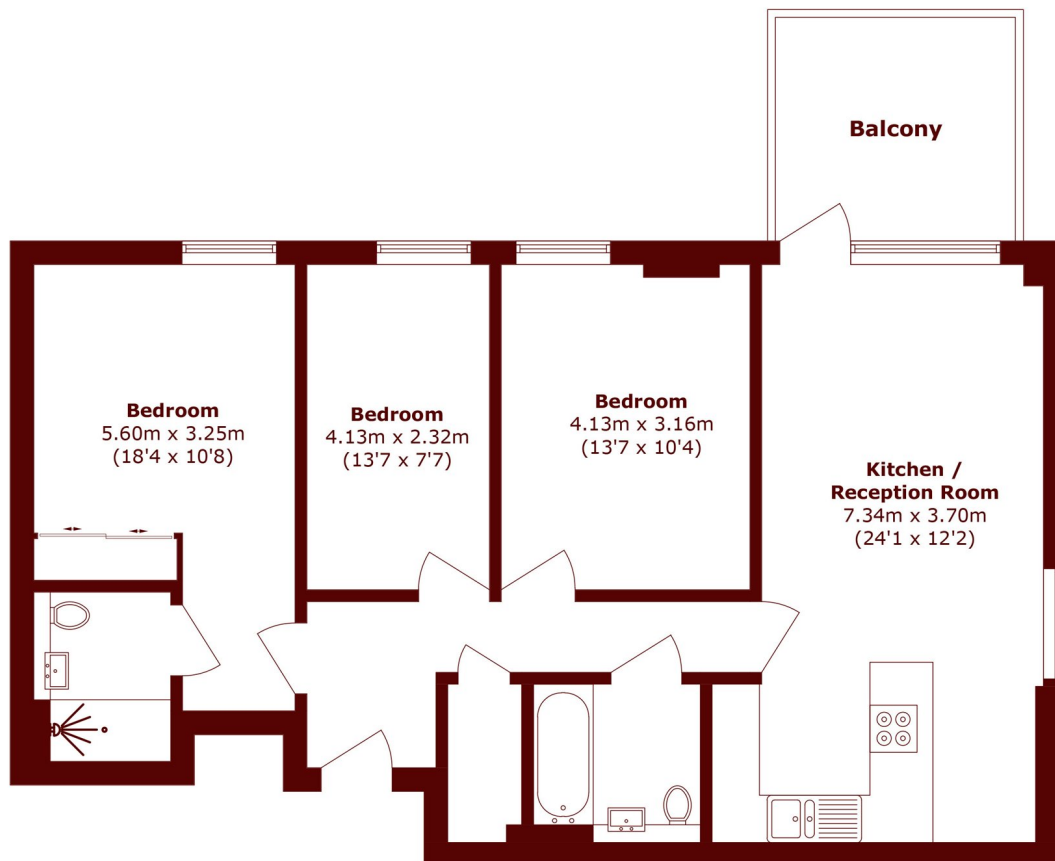
# ABOUT THE PROPERTY

Naturally bright and spacious modern apartment set on the first floor, featuring a large private balcony/roof garden which overlooks the creek. Residents have exclusive access to a communal roof garden, gym and concierge on-site. Inside you will find a spacious living room, double aspect windows and an open plan kitchen. Bathroom suite and three large bedrooms, two of which have fitted wardrobes and the principle benefits from having an en suite.

The immediate area offers a choice of coffee shops, supermarkets, gyms and pubs. The centre of Greenwich for its royal park, Cutty Sark DLR, Greenwich pier, the covered market and much more is a short walk away.



# STEP INSIDE COFFERDAM WAY



Total area (approx.): 87.7 sq. m (944.0 sq. ft)

Balcony area (approx.): 8.6 sq. m (92.5 sq. ft)

**Greenwich**  
020 8312 8312

Energy Rating: B We aim to make our particulars both accurate and reliable. However, they are not guaranteed; nor do they form part of an offer or contract. If you require clarification on any points then please contact us, especially if you're traveling some distance to view. Please note that appliances and heating systems have not been tested and therefore no warranties can be given as to their good working order

**MARSH &  
PARSONS**