



CHURCHYARD ROW, SE11

£425,000

One double bedroom
Third floor
South-west facing
Balcony
24-hour concierge
Excellent location

@marshandparsons
marshandparsons.co.uk

MARSH &
PARSONS



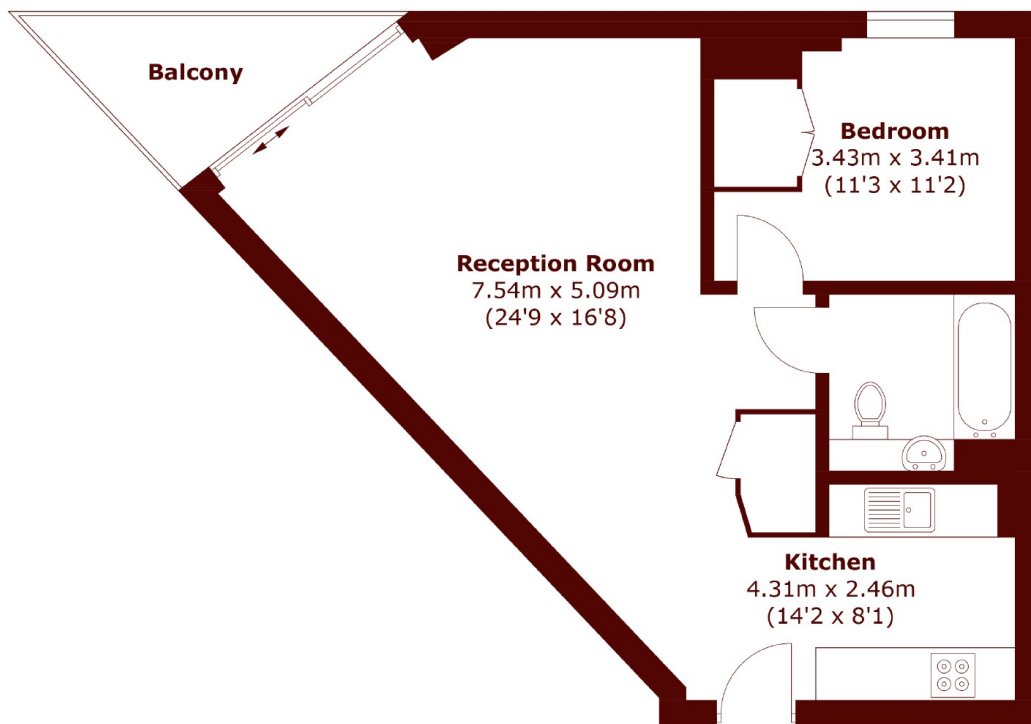
ABOUT THE PROPERTY

Set on the third floor, this spacious apartment comprises of a large reception room with floor-to-ceiling windows and access to a south-west facing balcony.

Ideally located in Zone 1 with all the amenities of Elephant & Castle on your doorstep. There are excellent transport links including both Bakerloo and Northern line, mainline services, numerous bus routes and cycle lanes offering easy access to the West End and City.



STEP INSIDE CHURCHYARD ROW



Total area (approx.): 50.8 sq. m (546.8 sq. ft)
Balcony: 4.3 sq. m (46.3 sq. ft)

Kennington
020 7587 1533

Energy Rating: B We aim to make our particulars both accurate and reliable. However, they are not guaranteed; nor do they form part of an offer or contract. If you require clarification on any points then please contact us, especially if you're traveling some distance to view. Please note that appliances and heating systems have not been tested and therefore no warranties can be given as to their good working order

**MARSH &
PARSONS**