



## LONGLANDS COURT, W11

£675 per week (£2,925 per month)

Two bedrooms  
Excellent condition  
Balcony  
Lift access  
Prime location  
Lateral space

@marshandparsons  
marshandparsons.co.uk

MARSH &  
PARSONS



# ABOUT THE PROPERTY

A wonderful two bedroom apartment with a south facing balcony in the heart of Notting Hill.

Longlands Court is wonderfully positioned between Westbourne Grove and the world-renowned Portobello Road with a fabulous choice of fashionable shops, cafés and restaurants all on the doorstep whilst there are excellent transport links close by at Notting Hill Gate providing access to the Central, Circle and District lines.

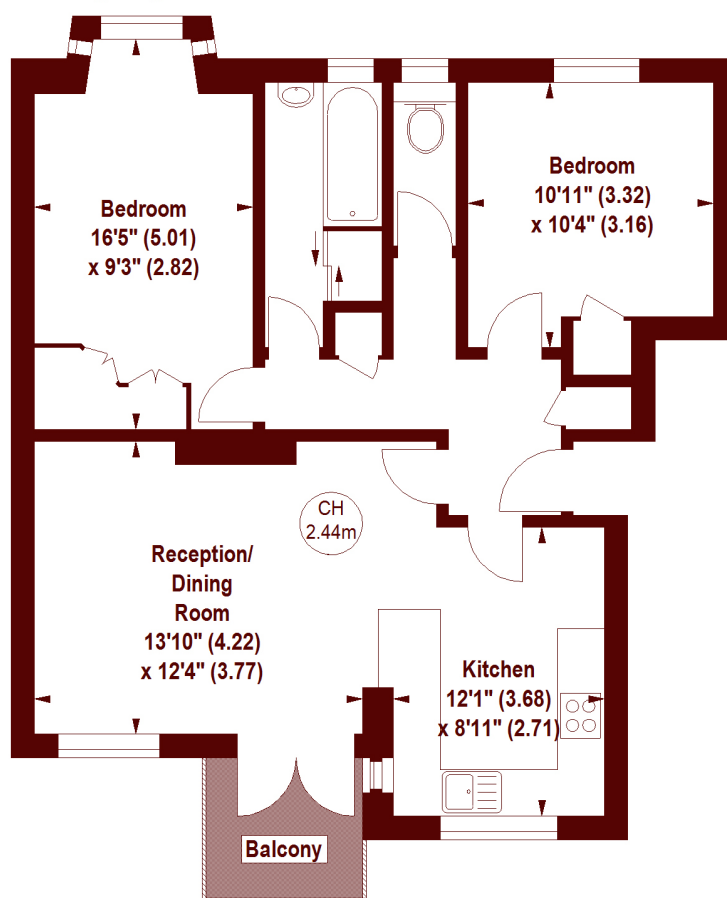


# STEP INSIDE LONGLANDS COURT

## Longlands Court, W11

APPROX. GROSS INTERNAL FLOOR AREA 735 SQFT / 68.28 SQM

Key :  
CH - Ceiling Height



### SECOND FLOOR

The floor plan is not to scale and measurements and areas shown are approximate and therefore should be used for illustrative purposes only. The plan has been prepared in accordance with the RICS code of Measuring Practice and whilst we have confidence in the information produced, it must not be relied on.

If there is any aspect of particular importance, you should carry out or commission your own inspection of the property.

Copyright of FeaturePRO.

Notting Hill  
020 7313 6910

Energy Rating: We aim to make our particulars both accurate and reliable. However, they are not guaranteed; nor do they form part of an offer or contract. If you require clarification on any points then please contact us, especially if you're traveling some distance to view. Please note that appliances and heating systems have not been tested and therefore no warranties can be given as to their good working order

MARSH &  
PARSONS