



HOLLAND ROAD, W14

£525,000

Two Double Bedrooms
Period Building
High Ceilings
Beautifully Presented
Raised Ground Floor
Prime Location

@marshandparsons
marshandparsons.co.uk

MARSH &
PARSONS



ABOUT THE PROPERTY

Offers in Excess of £450K - This wonderful two double bedroom apartment is situated on the raised ground floor of a period building on this popular street in Holland Park.

The property comprises two double bedrooms both with excellent fitted storage, a modern bathroom, a beautifully finished open-plan kitchen and spacious reception room with wonderful high ceilings.

The apartment is located a short walk from the Central line and Overground. Westfield shopping centre is just a stroll up the road with endless amenities to meet all your shopping/dining needs.

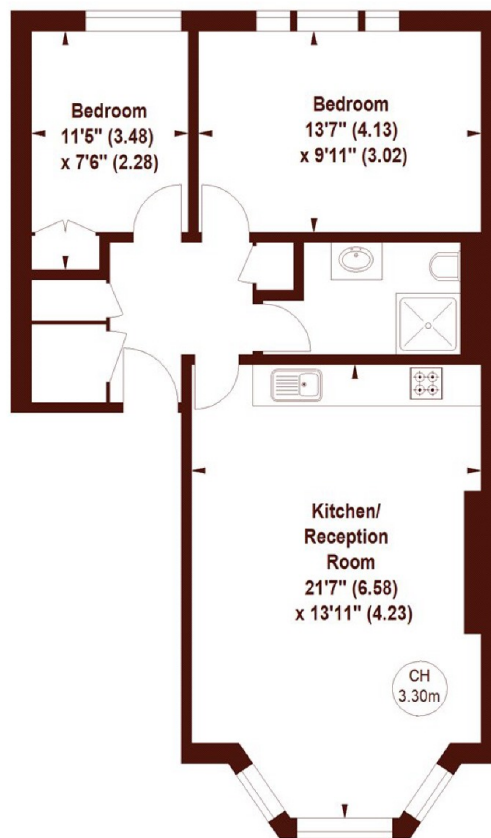


STEP INSIDE HOLLAND ROAD

Holland Road, W14

APPROX. GROSS INTERNAL FLOOR AREA 644 SQFT / 59.83 SQM

Key :
CH - Ceiling Height



RAISED GROUND FLOOR

Not to scale, for guidance only and must not be relied upon as a statement of fact.
All measurements and areas are approximate only

Holland Park
020 7605 6890

Energy Rating: C We aim to make our particulars both accurate and reliable. However, they are not guaranteed; nor do they form part of an offer or contract. If you require clarification on any points then please contact us, especially if you're traveling some distance to view. Please note that appliances and heating systems have not been tested and therefore no warranties can be given as to their good working order

MARSH &
PARSONS