



## Christchurch Road, SW2

£500,000



- Large private garden
- Two bedrooms

- Two bathrooms
- Close to Station

- Share of freehold
- EPC: C







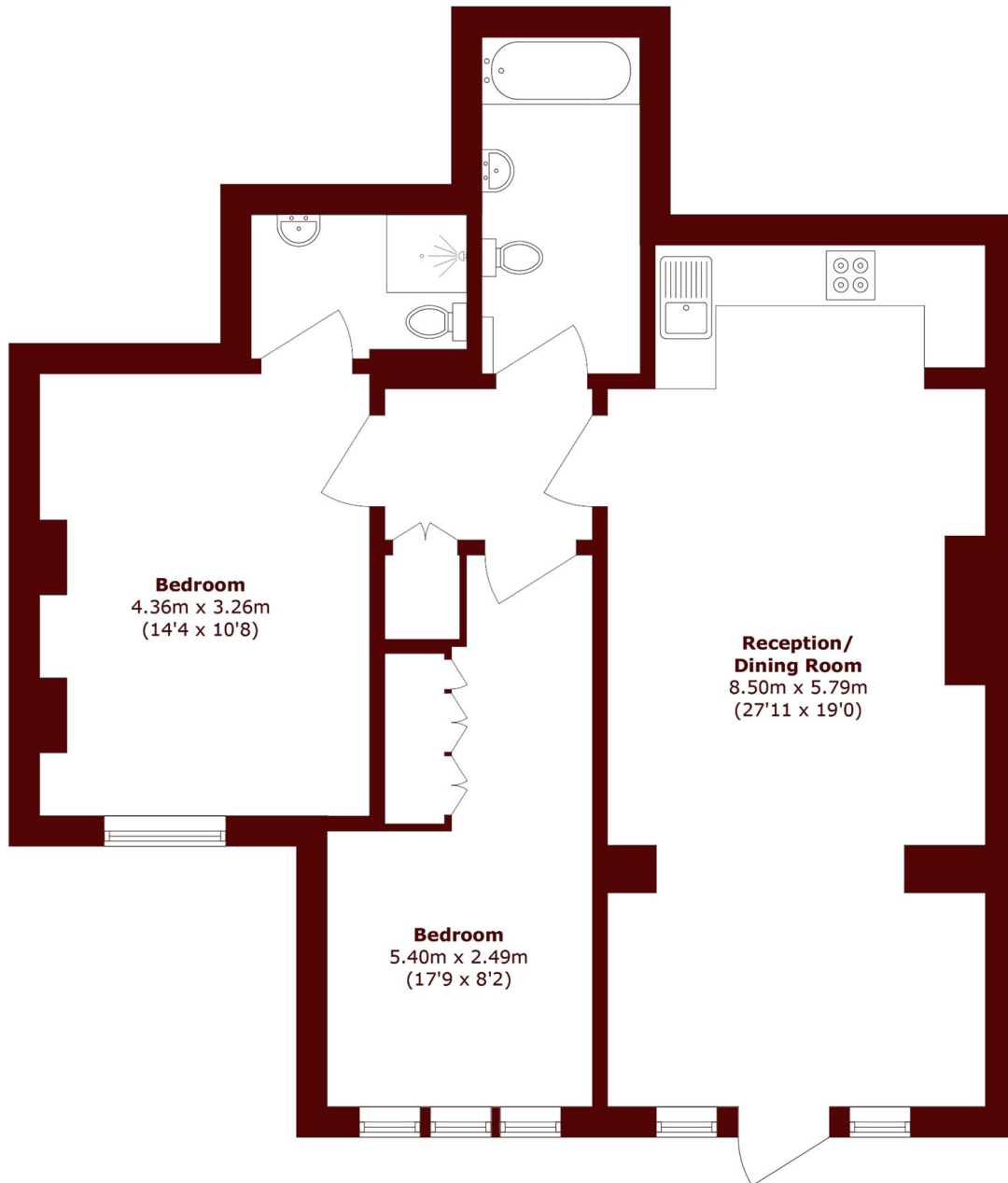
## ABOUT THE PROPERTY

This stunning two bedroom garden flat is located just moments from Tulse Hill station. The property boasts an enormous private garden with a open plan kitchen and living room that leads out onto the large patio. The property offers a main bedroom with an en-suite bathroom and a separate family sized bathroom beside the second bedroom. This stunning opportunity is perfect for garden lovers.



Located on Christchurch Road in Tulse Hill, this home is just a few minutes walk from Tulse Hill railway station. Several London bus routes serve stops nearby, providing easy connections to other parts of south-west London and beyond. The combination of rail and bus links offers excellent commuting options for getting around London.





Total area (approx.): 72.4 sq. m (779.3 sq. ft)

**Marsh & Parsons Streatham**

113-117 Streatham Hill,  
London, SW2 4UG  
020 8671 0171