



HARMOOD STREET, NW1

£725,000

Two bedrooms
Two bathrooms
Outside space
Period conversion
Split-level
Quiet street

@marshandparsons
marshandparsons.co.uk

MARSH &
PARSONS



ABOUT THE PROPERTY

This split-level apartment, set over the ground and lower ground floors of a period conversion in central Camden, features a spacious living room with kitchen/diner, two double bedrooms, two bathrooms, and a private courtyard garden.

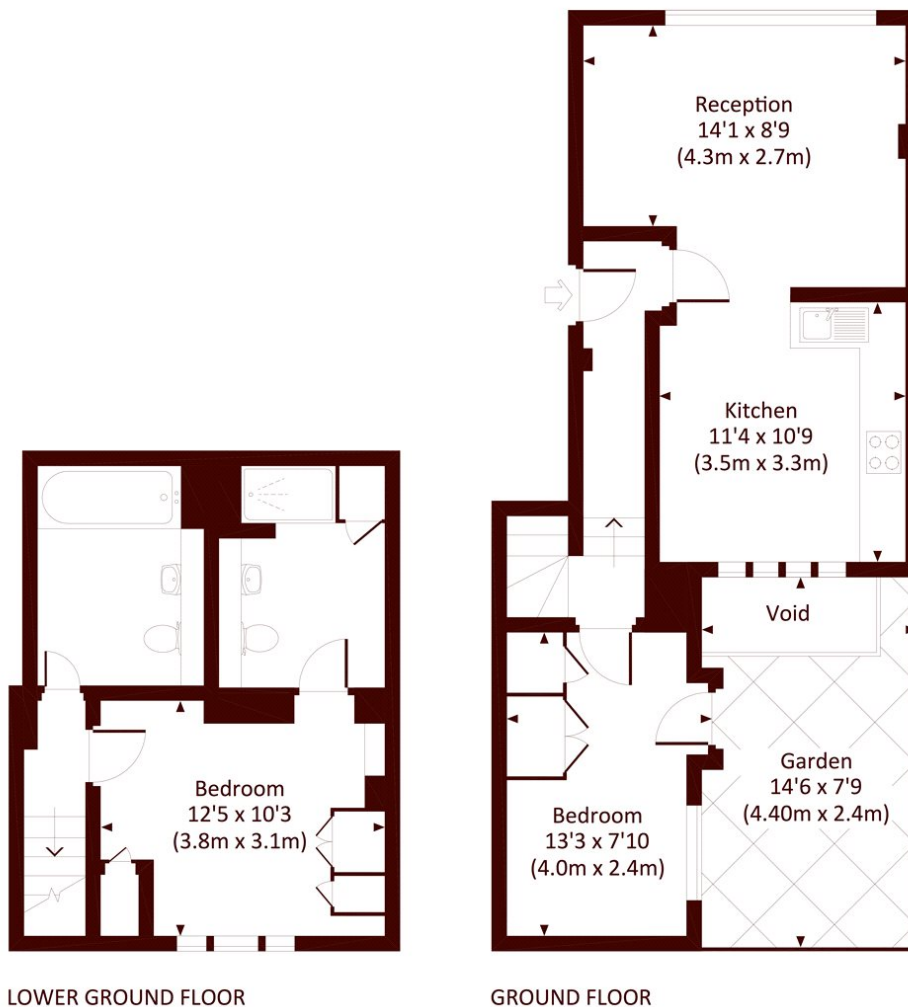
Harmood Street is one of the area's most desirable roads, close to transport links, cafes, shops, markets, and attractions like the Roundhouse. Chalk Farm (Northern Line) and Kentish Town West (Overground) stations are both nearby.



STEP INSIDE HARMOOD STREET

HARMOOD STREET, NW1

Approx. gross internal area
810 Sq Ft. / 75.3 Sq M.



All measurements have been made in accordance with RICS Code of Measuring Practice which are approximate only and only for illustrative purposes. For the avoidance of doubt, Dowling Jones Design shall not be liable for any reliance on these measurements. © 2017 www.dowlingjones.com 020 7610 9933

Camden
020 7244 2200

Energy Rating: C We aim to make our particulars both accurate and reliable. However, they are not guaranteed; nor do they form part of an offer or contract. If you require clarification on any points then please contact us, especially if you're traveling some distance to view. Please note that appliances and heating systems have not been tested and therefore no warranties can be given as to their good working order

MARSH &
PARSONS