



TULSE HILL, SW2

£595,000

Two Bedrooms
Two Bathrooms
Private Balcony
New Build
Top Floor Apartment

@marshandparsons
marshandparsons.co.uk

MARSH &
PARSONS



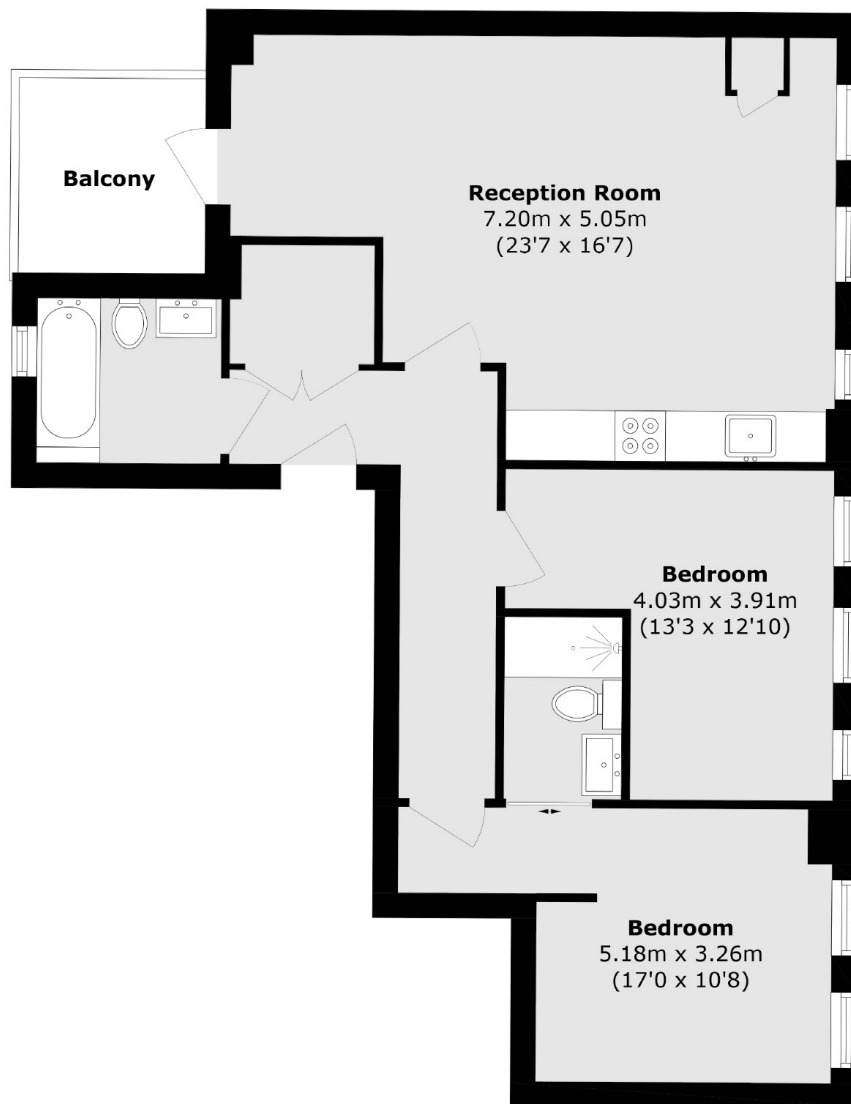
ABOUT THE PROPERTY

A fabulous two bedroom, two bathroom modern top floor apartment with a private balcony, situated in this exclusive development located close to Brixton and the lovely Brockwell Park.

The property is close to the large open space of Brockwell Park offering tennis courts and a Lido. It also is conveniently located between Brixton and Herne Hill with access to their excellent transport links.



STEP INSIDE TULSE HILL



Total area (approx.): 75.4 sq. m (811.6 sq. ft)

Balcony area (approx.): 5.1 sq. m (54.8 sq. ft)

Brixton
020 7733 4595

Energy Rating: We aim to make our particulars both accurate and reliable. However, they are not guaranteed; nor do they form part of an offer or contract. If you require clarification on any points then please contact us, especially if you're traveling some distance to view. Please note that appliances and heating systems have not been tested and therefore no warranties can be given as to their good working order

**MARSH &
PARSONS**