



TUNNEL AVENUE, SE10

£650,000

End of terrace
Large garden
Driveway
Three bedrooms
Two receptions
Energy rating: d

@marshandparsons
marshandparsons.co.uk

MARSH &
PARSONS



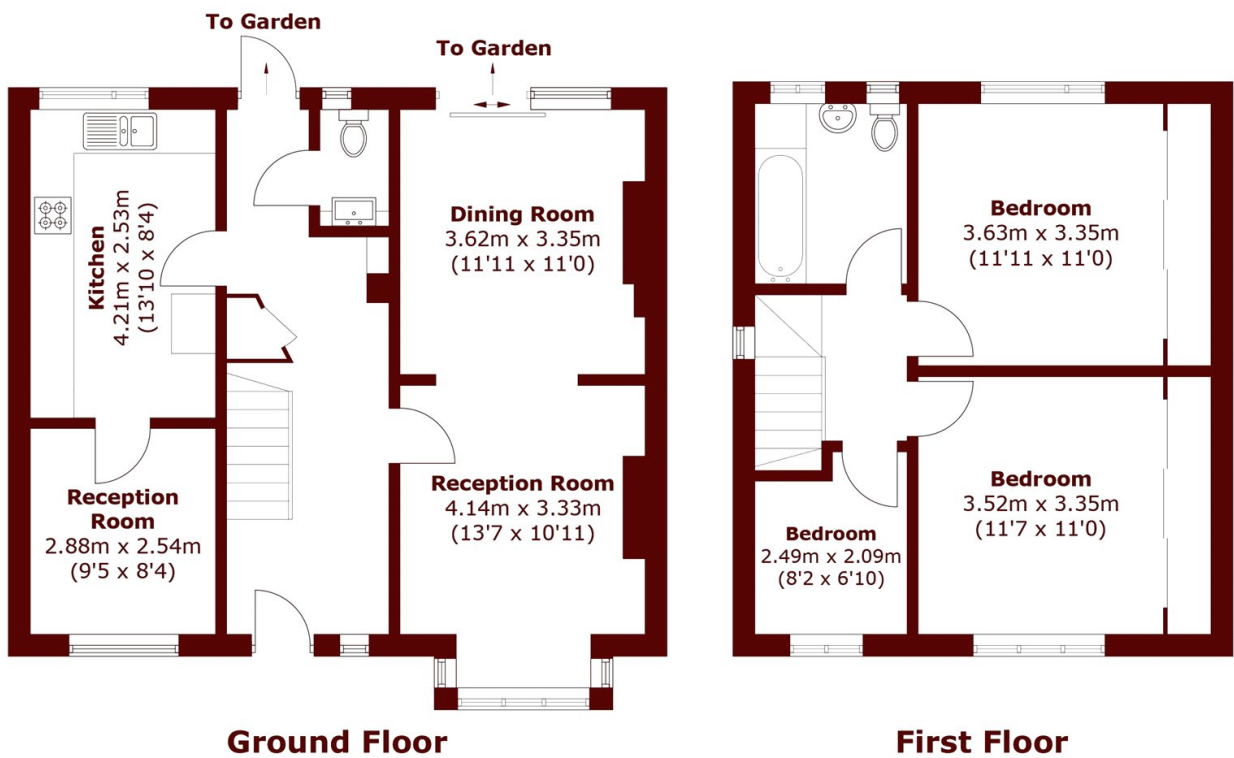
ABOUT THE PROPERTY

End of terrace house featuring rare driveway, a large private rear garden and within walking distance to North Greenwich tube station and O2 centre. The accommodation is spread over two levels, comprising spacious through lounge with sliding doors leading out to the garden, kitchen/breakfast room, study room and a very useful guest WC. Upstairs offers a family bathroom, two large double bedrooms and a large single bedroom.

Westcombe Park mainline station is a short walk away, as well a wide range of shopping facilities, coffee shops, restaurants and river front pubs. Greenwich town centre, its royal park, covered market and Cutty Sark, are a very short bus ride away.



STEP INSIDE TUNNEL AVENUE



Total area (approx.): 107.2 sq. m (1,153.9 sq. ft)

Greenwich
020 8312 8312

Energy Rating: D We aim to make our particulars both accurate and reliable. However, they are not guaranteed; nor do they form part of an offer or contract. If you require clarification on any points then please contact us, especially if you're traveling some distance to view. Please note that appliances and heating systems have not been tested and therefore no warranties can be given as to their good working order

MARSH &
PARSONS