



HAYDON PARK ROAD, SW19

£3,950 per month

Four bedrooms
Two bathrooms
Close to transport links
Furnished
Open plan living
Energy rating: c

@marshandparsons
marshandparsons.co.uk

MARSH &
PARSONS



ABOUT THE PROPERTY

A four bedroom two bathroom split level first floor apartment located on Haydon Park Road.

The property is offered furnished and has recently been refurbished and has four double bedrooms, open plan living room and two bathrooms.

Conveniently located close to Transport Links.

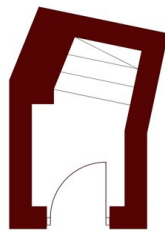


STEP INSIDE HAYDON PARK ROAD



First Floor

Second Floor



Ground Floor

Total area (approx.): 93.7 sq. m (1,008.6 sq. ft)
(Excluding Eaves)

Wimbledon
020 8879 6661

Energy Rating: C We aim to make our particulars both accurate and reliable. However, they are not guaranteed; nor do they form part of an offer or contract. If you require clarification on any points then please contact us, especially if you're traveling some distance to view. Please note that appliances and heating systems have not been tested and therefore no warranties can be given as to their good working order

**MARSH &
PARSONS**