



## THURLOE STREET, SW7

£1,200,000

Two Double Bedrooms  
En Suite  
Large Reception Room  
Private Garden  
Separate Kitchen  
Shower Room

@marshandparsons  
marshandparsons.co.uk

MARSH &  
PARSONS



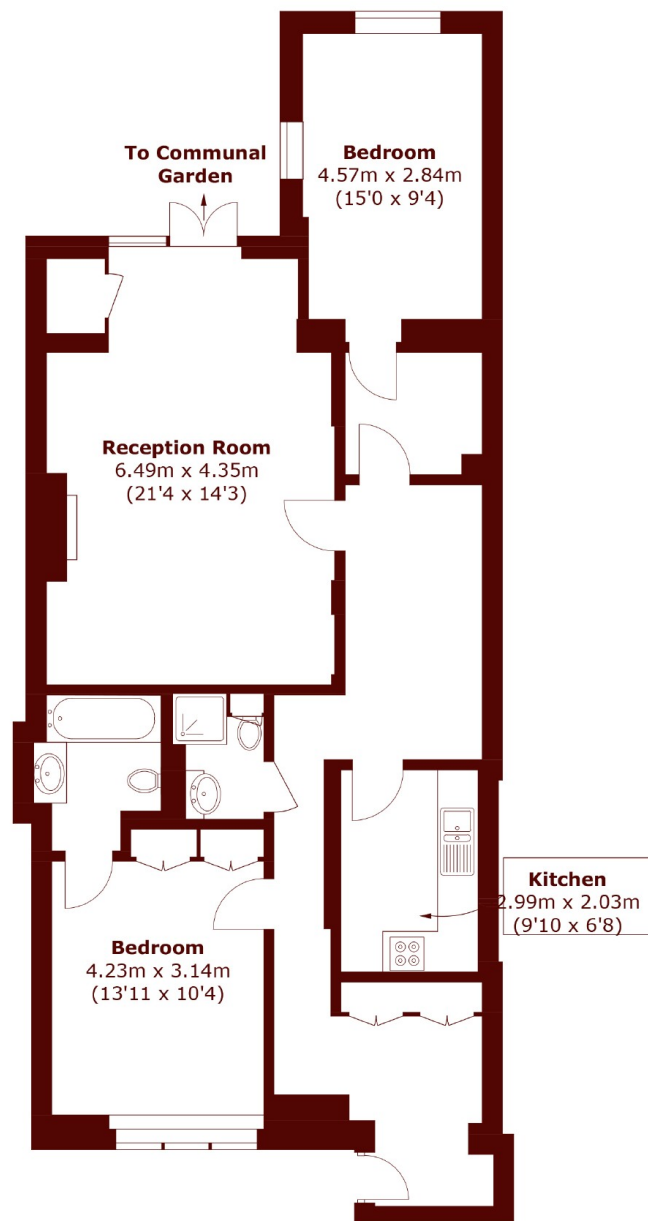
# ABOUT THE PROPERTY

A superb two bedroom garden flat of 1,033 sq ft (96 sq m) located at lower ground floor level of this handsome grade II listed white stucco-fronted period building. The property offers spacious accommodation and has the benefit of a charming rear south-facing patio terrace.

The property is located only a moment away from South Kensington underground station and just off the pedestrianised area which forms the start of 'Museum mile'. This 'buzzy' location provides an in-coming buyer to live in a truly vibrant and quintessentially South Kensington location.



# STEP INSIDE THURLOE STREET



Total area (approx.): 93.6 sq. m (1,007.5 sq. ft)

South Kensington  
020 7590 0800

Energy Rating: C We aim to make our particulars both accurate and reliable. However, they are not guaranteed; nor do they form part of an offer or contract. If you require clarification on any points then please contact us, especially if you're traveling some distance to view. Please note that appliances and heating systems have not been tested and therefore no warranties can be given as to their good working order

MARSH &  
PARSONS