



ST. MARKS PLACE, W11

£1,038 per week

Second Floor Flat
Natural Light Throughout
Excellent Condition
Two Double Bedrooms
Large Roof Terrace
Prime Location

@marshandparsons
marshandparsons.co.uk

MARSH &
PARSONS



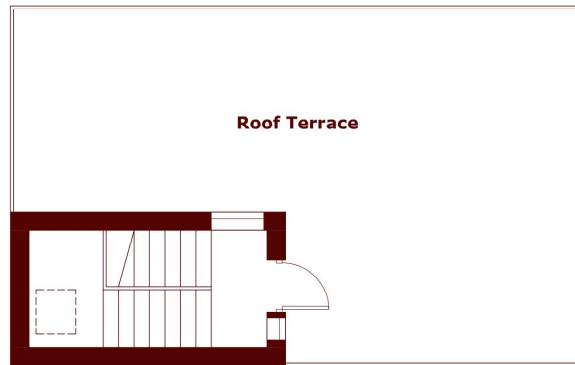
ABOUT THE PROPERTY

Split across three levels, this apartment features a stunning full-floor roof terrace and excellent natural light throughout. Boasting two well-proportioned bedrooms with ample storage and a bright open plan kitchen/reception ideal for entertaining.

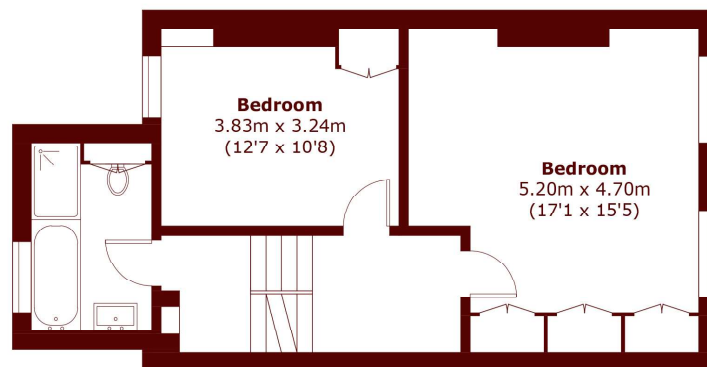
St. Marks Place is a quiet road conveniently located for Holland Park underground, Ladbroke Grove Underground and the shops and cafes of Notting Hill and Portobello Road.



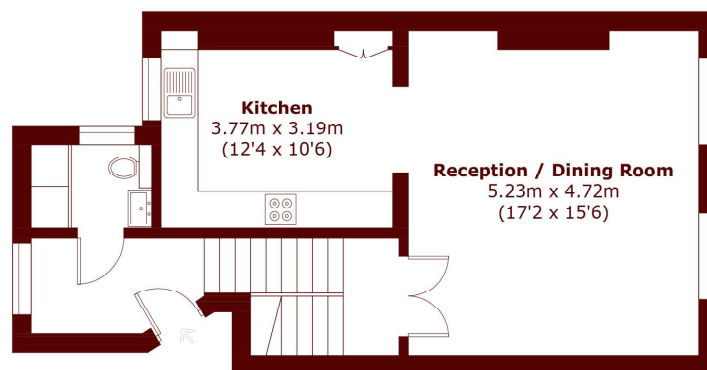
STEP INSIDE ST. MARKS PLACE



Third Floor



Second Floor



First Floor

Total area (approx.): 110.3 sq. m (1,187.2 sq. ft)
Roof Terrace (approx.): 42.1 sq. m (453.2 sq. ft)

North Kensington
020 7313 8351

Energy Rating: D We aim to make our particulars both accurate and reliable. However, they are not guaranteed; nor do they form part of an offer or contract. If you require clarification on any points then please contact us, especially if you're traveling some distance to view. Please note that appliances and heating systems have not been tested and therefore no warranties can be given as to their good working order

MARSH &
PARSONS