



## CARMICHAEL COURT, SW13

£575,000

Split-level maisonette home  
Three bedrooms  
Large bright reception room  
Stylish modern finish  
Art deco architecture  
Centre of Barnes Village

@marshandparsons  
marshandparsons.co.uk

MARSH &  
PARSONS



# ABOUT THE PROPERTY

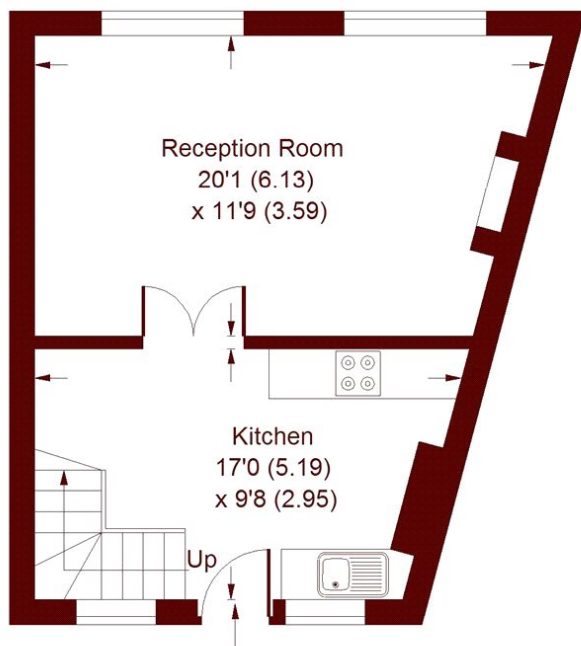
Marsh & Parsons are delighted to present this fantastic split-level maisonette neatly situated in a highly desirable 'Art-Deco' gated development in the heart of Barnes Village. This modern and spacious property is located on the third floor with ample space across the two floors, arranged to provide three bedrooms and a modern bathroom on the upper floor. The living space spans across the lower of the two floors with a large living/dining room and a modern eat in kitchen with ample storage throughout. Benefitting from the newly fitted double glazed windows and fabulous views over central London.



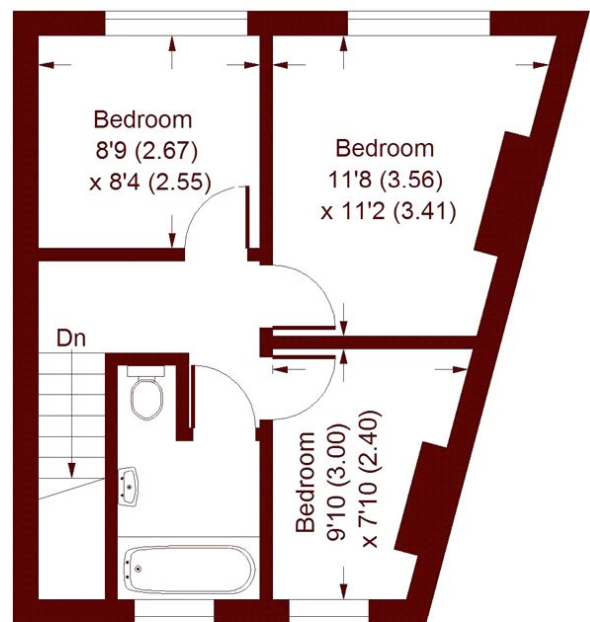
# STEP INSIDE CARMICHAEL COURT

## Carmichael Court, SW13

APPROX. GROSS INTERNAL FLOOR AREA  
772 SQFT / 71.7 SQM



**THIRD FLOOR**



**FOURTH FLOOR**

Whilst every attempt has been made to ensure the accuracy of the floor plan, measurements are approximate and not to scale. No guarantee is given on the total square footage of the property quoted on the plan. Figures given are for guidance. Plan is for illustration purposes only.

**Barnes & East Sheen**  
020 8563 8333

Energy Rating: D We aim to make our particulars both accurate and reliable. However, they are not guaranteed; nor do they form part of an offer or contract. If you require clarification on any points then please contact us, especially if you're traveling some distance to view. Please note that appliances and heating systems have not been tested and therefore no warranties can be given as to their good working order

**MARSH &  
PARSONS**