



## RAILTON ROAD, SE24

£525,000

Two Double Bedrooms  
Split Level  
Own Front Door  
Close To Transport  
Open Plan Living  
Energy Rating: D

@marshandparsons  
marshandparsons.co.uk

MARSH &  
PARSONS



# ABOUT THE PROPERTY

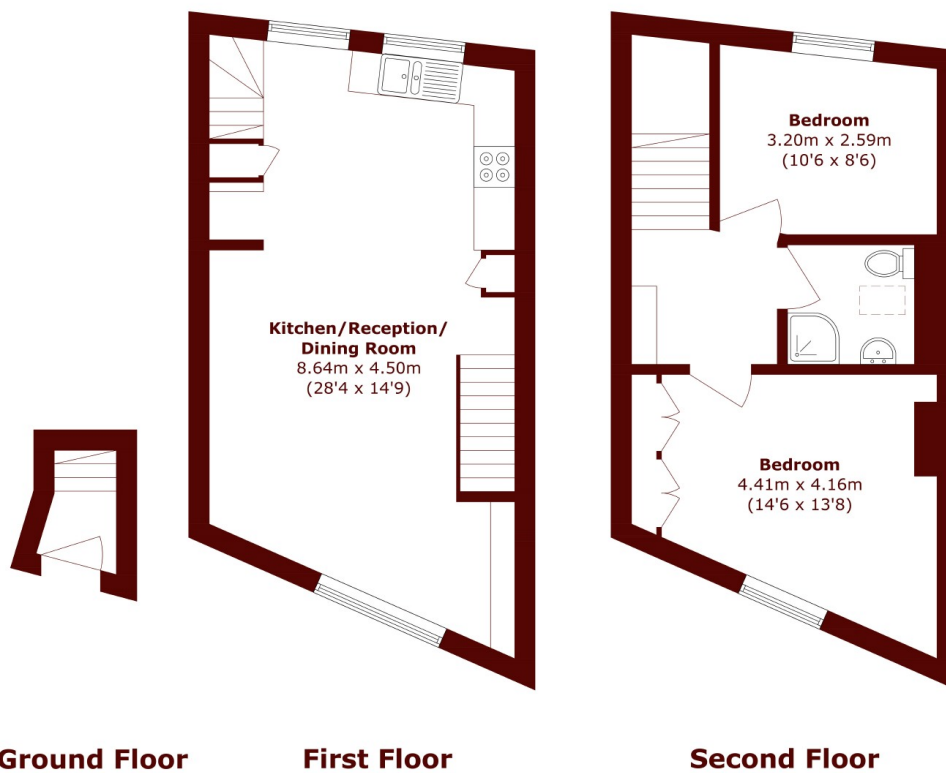
A characterful two bedroom split-level maisonette set over the first and second floors of a charming period property on Railton Road.

Entering through your own front door and offering approximately 780 sqft of well-planned living space the flat boasts a bright and spacious open-plan kitchen/reception/dining room on the first floor offering ample space for entertaining including a desk nook. Upstairs, the second floor comprises two generous double bedrooms and a stylish bathroom.

Located in the heart of Herne Hill, Railton Road benefits from a community-focused atmosphere. The area is well-known for its independent cafes, local shops, and



# STEP INSIDE RAILTON ROAD



Total area (approx.): 72.3 sq. m (778.2 sq. ft)

**Brixton**  
020 7733 4595

Energy Rating: D We aim to make our particulars both accurate and reliable. However, they are not guaranteed; nor do they form part of an offer or contract. If you require clarification on any points then please contact us, especially if you're traveling some distance to view. Please note that appliances and heating systems have not been tested and therefore no warranties can be given as to their good working order

**MARSH &  
PARSONS**