

Westbourne Grove, W2

£1,650,000

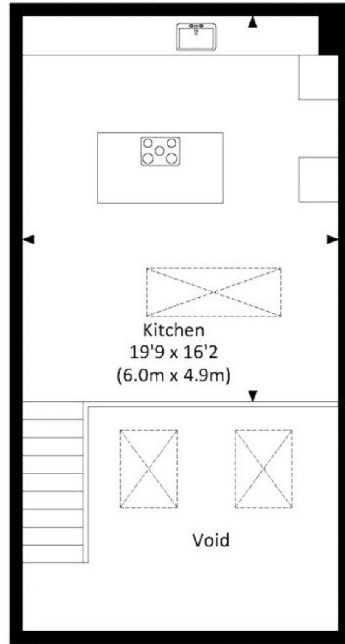


- Excellent Condition
- Vaulted Ceilings
- Separate Kitchen
- 24-Hour Concierge
- Underground Parking
- South Facing Balcony

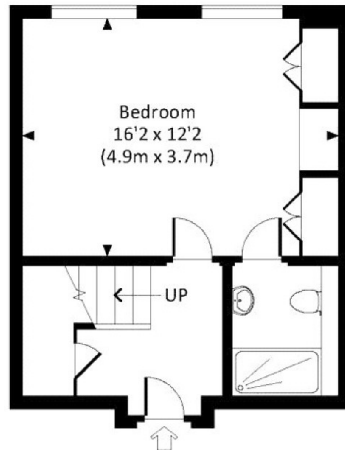
KENSINGTON GARDENS SQUARE, W2

Approx. gross internal area

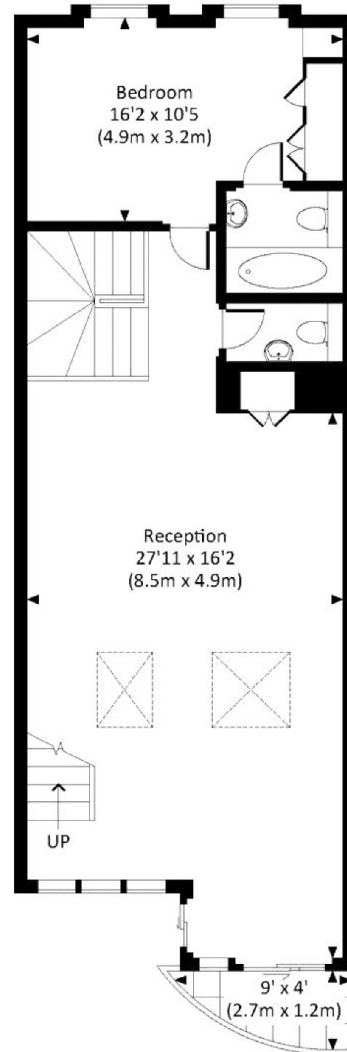
1375 Sq.Ft. / 127.7 Sq.M. Exclude Void



SIXTH FLOOR



FOURTH FLOOR



FIFTH FLOOR



All measurements have been made in accordance with RICS Code of Measuring Practice which are approximate only and only for illustrative purposes. For the avoidance of doubt, Dowling Jones Design shall not be liable for any reliance on these measurements. © 2017 www.dowlingjones.com 020 7610 9933

Marsh & Parsons Notting Hill

2-6 Kensington Park Road,
London, W11 3BU
020 7313 2890

We aim to make our particulars both accurate and reliable. However, they are not guaranteed; nor do they form part of an offer or contract. If you require clarification on any points then please contact us, especially if you're traveling some distance to view. Please note that appliances and heating systems have not been tested and therefore no warranties can be given as to their good working order.