



## VICTORIA ROAD, NW6

£2,250 per month

Two Double Bedrooms  
Private Garden  
Victorian Conversion  
Modern  
Close To Transport  
Near to High Street

@marshandparsons  
marshandparsons.co.uk

MARSH &  
PARSONS



# ABOUT THE PROPERTY

A modern two double bedroom flat with a spacious open plan reception which has direct access onto a private garden. Layout also includes a modern family bathroom and fully fitted kitchen.

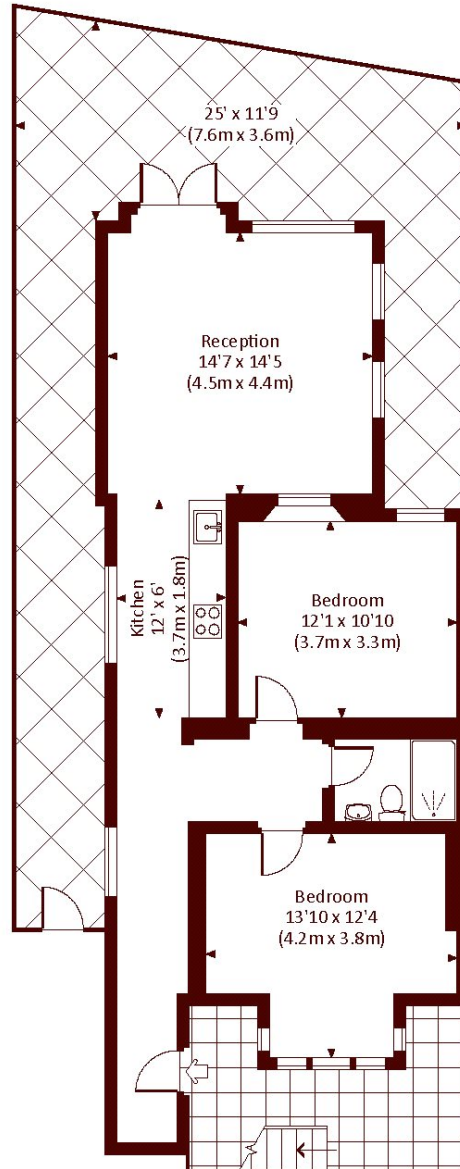
Victoria Road is a residential street located within easy reach of green open spaces of Queen's Park and the restaurants, cafes and amenities of Kilburn High Road and Salusbury Road. Local transport links include Kilburn High Road and Queen's Park.



# STEP INSIDE VICTORIA ROAD

## VICTORIA ROAD, NW6

Approx. gross internal area  
759 Sq Ft. / 70.5 Sq M.



LOWER GROUND FLOOR



All measurements have been made in accordance with RICS Code of Measuring Practice which are approximate only and only for illustrative purposes. For the avoidance of doubt, Dowling Jones Design shall not be liable for any reliance on these measurements. © 2017 www.dowlingjones.com 020 7610 9933

Queen's Park  
020 8939 1780

Energy Rating: C We aim to make our particulars both accurate and reliable. However, they are not guaranteed; nor do they form part of an offer or contract. If you require clarification on any points then please contact us, especially if you're traveling some distance to view. Please note that appliances and heating systems have not been tested and therefore no warranties can be given as to their good working order

MARSH &  
PARSONS