



## BRONSON ROAD, SW20

£695,000

Two Double Bedrooms  
West Facing Garden  
Extension Potential  
Cul-De-Sac  
No Onward Chain  
Energy rating: d

@marshandparsons  
marshandparsons.co.uk

MARSH &  
PARSONS

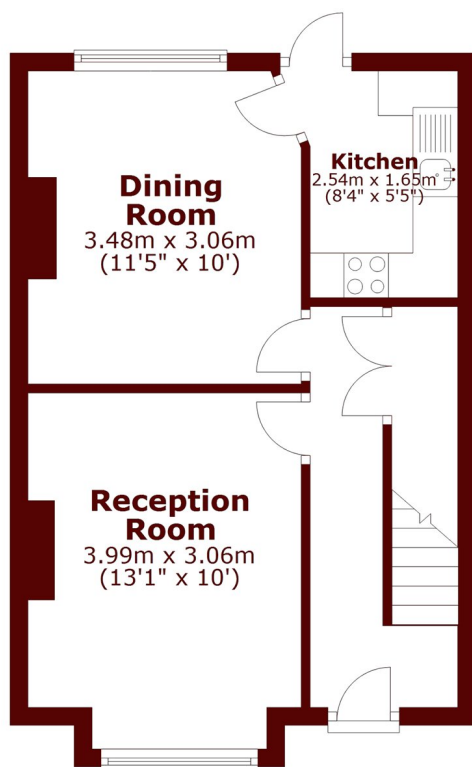


# ABOUT THE PROPERTY

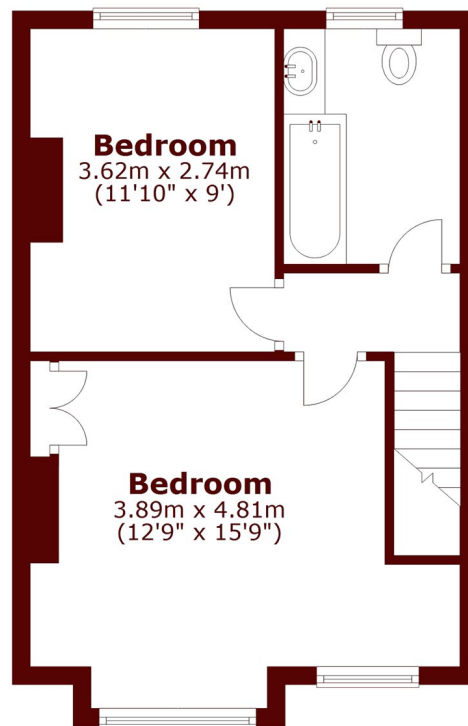
This charming two bedroom period home offers a sunny west facing rear garden ideally located in the sought after Wimbledon Chase and Raynes Park area. The property is offered with no onward chain and approached via a pretty front garden. Inside, the bright ground floor features a welcoming front reception room with a character fireplace, separate dining room, and a well appointed kitchen opening onto the mature west-facing rear garden. Upstairs are two generous double bedrooms, a spacious bathroom, and a large loft offering scope for conversion subject to planning permission.



# STEP INSIDE BRONSON ROAD



**Ground Floor**



**First Floor**

Total area: approx. 70.3 sq. metres (756.7 sq. feet)

Wimbledon  
020 8879 6660

Energy Rating: D We aim to make our particulars both accurate and reliable. However, they are not guaranteed; nor do they form part of an offer or contract. If you require clarification on any points then please contact us, especially if you're traveling some distance to view. Please note that appliances and heating systems have not been tested and therefore no warranties can be given as to their good working order

**MARSH &  
PARSONS**