



ARCADIAN PLACE, SW18

£1,895,000

Arranged over four floors

Five bedrooms

Four bathrooms

Off street parking

Convenient location

Energy rating: c

@marshandparsons
marshandparsons.co.uk

MARSH &
PARSONS

ABOUT THE PROPERTY

Built circa 2005 this substantial five bedroom, three bathroom end terrace modern house occupies a quiet position within a private cul-de-sac. Built over four floors and with off-street parking, it offers generous and versatile family accommodation,

Arcadian Place is highly sought after and ideally positioned for Southfields Village and Southfields Underground Station providing District Line services into central London.

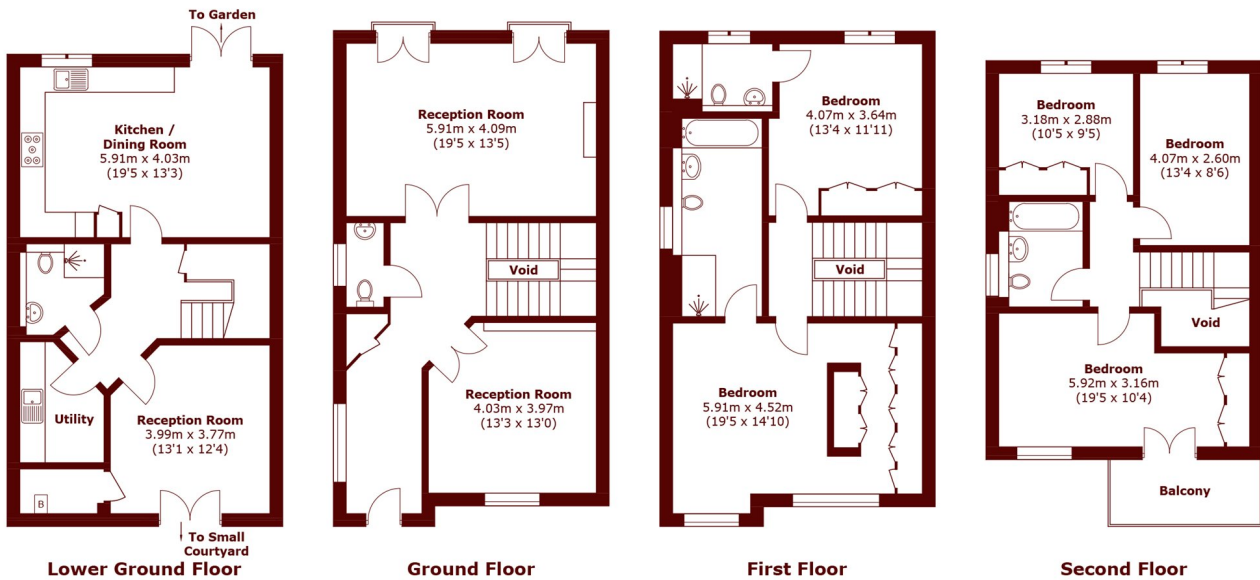








STEP INSIDE ARCADIAN PLACE



Total area (approx.): 238.1 sq. m (2,562.9 sq. ft)
(Excluding Void)
Balcony: 5.4 sq. m (58.1 sq. ft)

Wimbledon
020 8879 6660

Energy Rating: C We aim to make our particulars both accurate and reliable. However, they are not guaranteed; nor do they form part of an offer or contract. If you require clarification on any points then please contact us, especially if you're traveling some distance to view. Please note that appliances and heating systems have not been tested and therefore no warranties can be given as to their good working order

MARSH &
PARSONS