



CHERRY CRESCENT, TW8

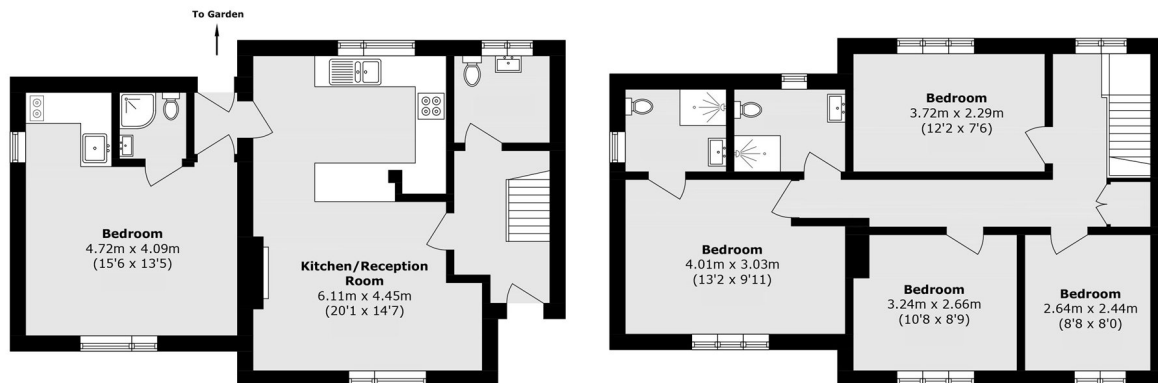
£3,000 per month

A modern five bedroom semi detached family home. The ground floor has an open plan living area, a downstairs bedroom with en-suite and an additional WC.

Five Bedrooms
Three Bathrooms
Semi-Detached

Private Garden
Off-Street Parking
Modern Throughout

STEP INSIDE CHERRY CRESCENT



Ground Floor

First Floor

Total area (approx.): 110.7 sq. m (1191.5 sq. ft)

Chiswick
020 8629 0900

Energy Rating: We aim to make our particulars both accurate and reliable. However, they are not guaranteed; nor do they form part of an offer or contract. If you require clarification on any points then please contact us, especially if you're traveling some distance to view. Please note that appliances and heating systems have not been tested and therefore no warranties can be given as to their good working order

**MARSH &
PARSONS**