



WELLINGTON GARDENS, SE7

£275,000

Conversion flat
One bedroom
One bathroom
Close to station
Private garden
Energy rating: c

@marshandparsons
marshandparsons.co.uk

MARSH &
PARSONS



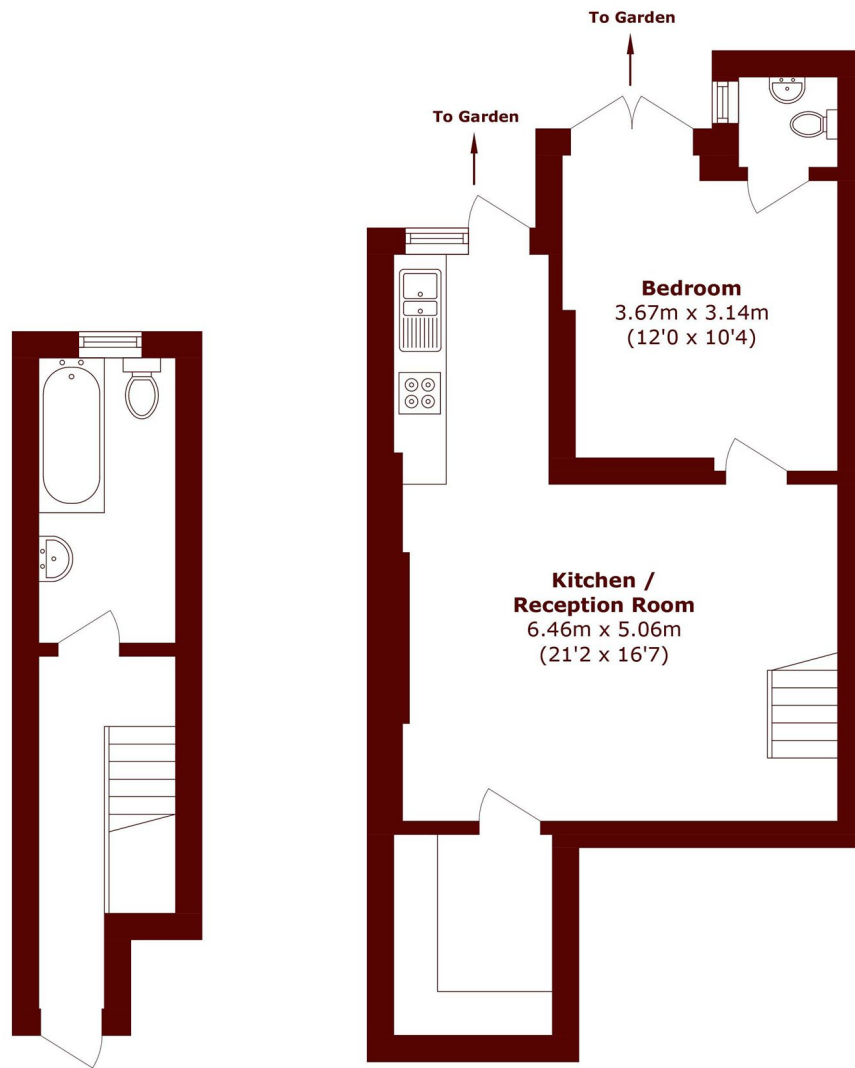
ABOUT THE PROPERTY

This one bedroom Victorian conversion garden flat is the perfect first time buy. As you enter the property you are welcomed by a long hallway and a large bathroom. On the lower floor there is an open plan kitchen and living space with direct access to a private garden. The property benefits from a double bedroom with double doors opening onto the private garden.

The property is located on a sought after road in Charlton just minutes' walk from Charlton station and the retail park. Charlton station provides direct access to London Bridge in just over 20 minutes. Offered with a share of the freehold.



STEP INSIDE WELLINGTON GARDENS



Ground Floor

Lower Ground Floor

Total area (approx.): 52.3 sq. m (562.9 sq. ft)

Charlton
020 8378 5450

Energy Rating: C We aim to make our particulars both accurate and reliable. However, they are not guaranteed; nor do they form part of an offer or contract. If you require clarification on any points then please contact us, especially if you're traveling some distance to view. Please note that appliances and heating systems have not been tested and therefore no warranties can be given as to their good working order

**MARSH &
PARSONS**